

Configuring the JNIOR for use with the Christie IMB

Last updated: December 11, 2018

The following information describes how to use the JNIOR with the Christie IMB server.

Please contact INTEG via e-mail at rshulkosky@integpg.com or via phone at 724-933-9350 extension 20 with any questions.

Overview

The Christie IMB can interact with the JNIOR two ways:

- 1) Directly control relay outputs on the JNIOR
- 2) Trigger macros on the JNIOR by sending the name of the macro to be executed to the JNIOR

You can use one or both methods. In order to use the second method above to execute macros on the JNIOR, the INTEG Cinema program must be installed on the JNIOR by the user. It is not installed at the factory.

Installing the Cinema Program

Cinema.JAR (for the Series 4 JNIOR) and Cinema.JNIOR (for the Series 3 JNIOR) are installed using the JNIOR Support Tool. The JNIOR Support Tool and the Update project that loads the Cinema program can be downloaded from the INTEG website at the following link.

<http://www.integpg.com/support/cinema-jnior/>

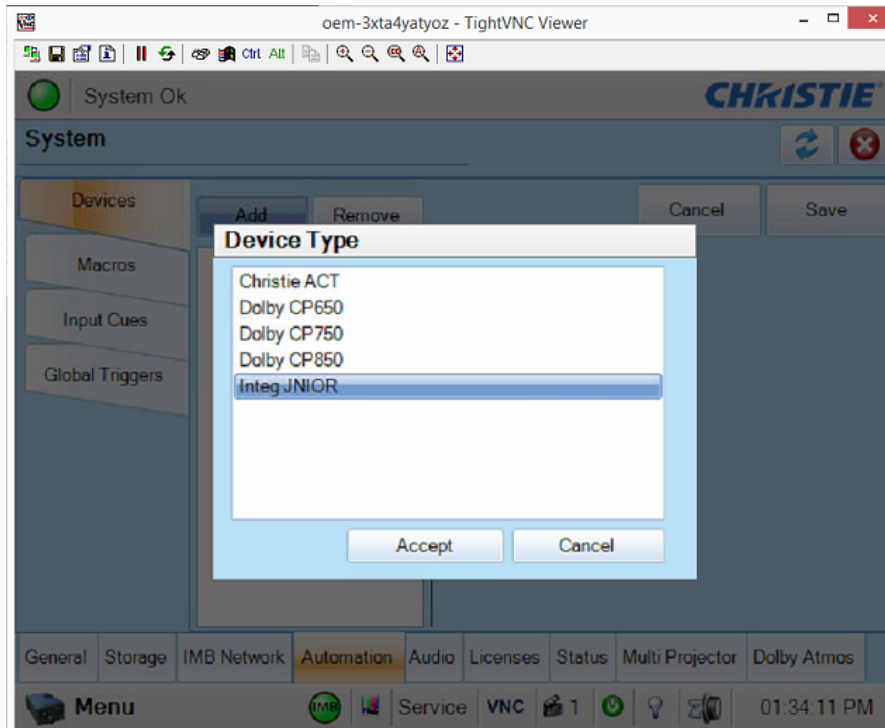
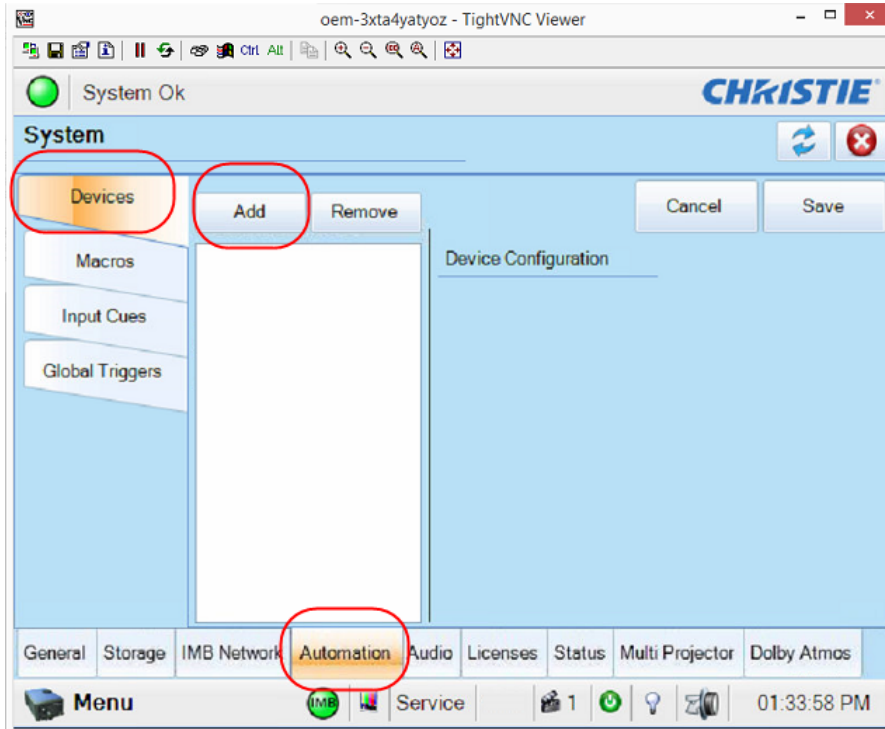
Please download the JNIOR Support Tool file and double click on it to install.

Please download the appropriate Cinema ‘update project’ zip file for your JNIOR, but do NOT unzip it. Go to the Update tab in the JNIOR Support Tool and click on the Open Project link and then navigate to where you saved the update project. The JNIOR Support Tool will unzip the project. Then click Publish Update to JNIOR and select your JNIOR.

NOTE: If this is the first time you are installing the Cinema program on your JNIOR, it is recommended that you leave all the update steps checked. If you have previously installed the Cinema program and only want to update to the latest version, then you only want the first and last steps checked. Uncheck all the other steps so your configuration is not changed.

Configuring the JNIOR and Christie IMB Communications

Please go to the System set-up - Automation and then the Devices tab in the Christie set-up. Then Add a new Device - the Integ JNIOR.



NOTE: All of the commands will be sent from the Christie IMB to the JNIOR using the JNIOR protocol port 9200.

You will only need one Automation device set-up for the JNIOR.

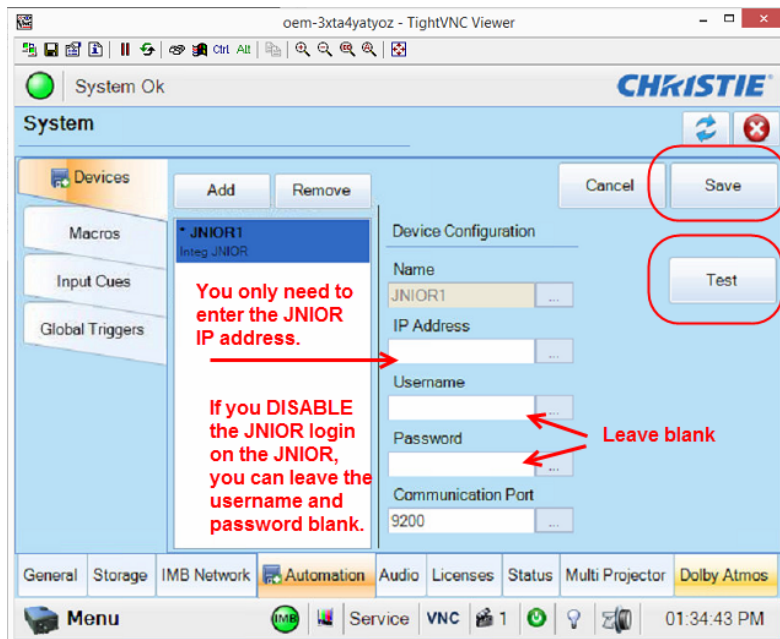
When the Christie original software was first released, the easiest and most efficient way to have the Christie IMB interact with the JNIOR was to DISABLE the JNIOR login on the JNIOR. This may or may not still be true with any updates to the Christie software, but it should not hurt to disable the JNIOR login.

NOTE: How to disable the JNIOR login on the JNIOR is described on the next page.

If you disable the JNIOR login, then you can leave the username and password 'blank' on the Christie device set-up page. As shown below, you only need to enter the JNIOR IP address.

Once you have disabled the JNIOR login on the JNIOR and entered the JNIOR IP address, you can then click on the 'Test' button on the Christie device page as shown below. This will cause the Christie IMB to make a connection to the JNIOR and verify a successful connection.

NOTE: You must click on the SAVE button on the Christie Devices tab to save the JNIOR configuration. A pop-up window will alert you that you have not entered a username or password, but as long as you disable the login on the JNIOR, you can say OK.



Disabling the JNIOR login

Even though the Christie can log into the JNIOR, it is typically recommended that you 'disable' the JNIOR server login on the JNIOR.

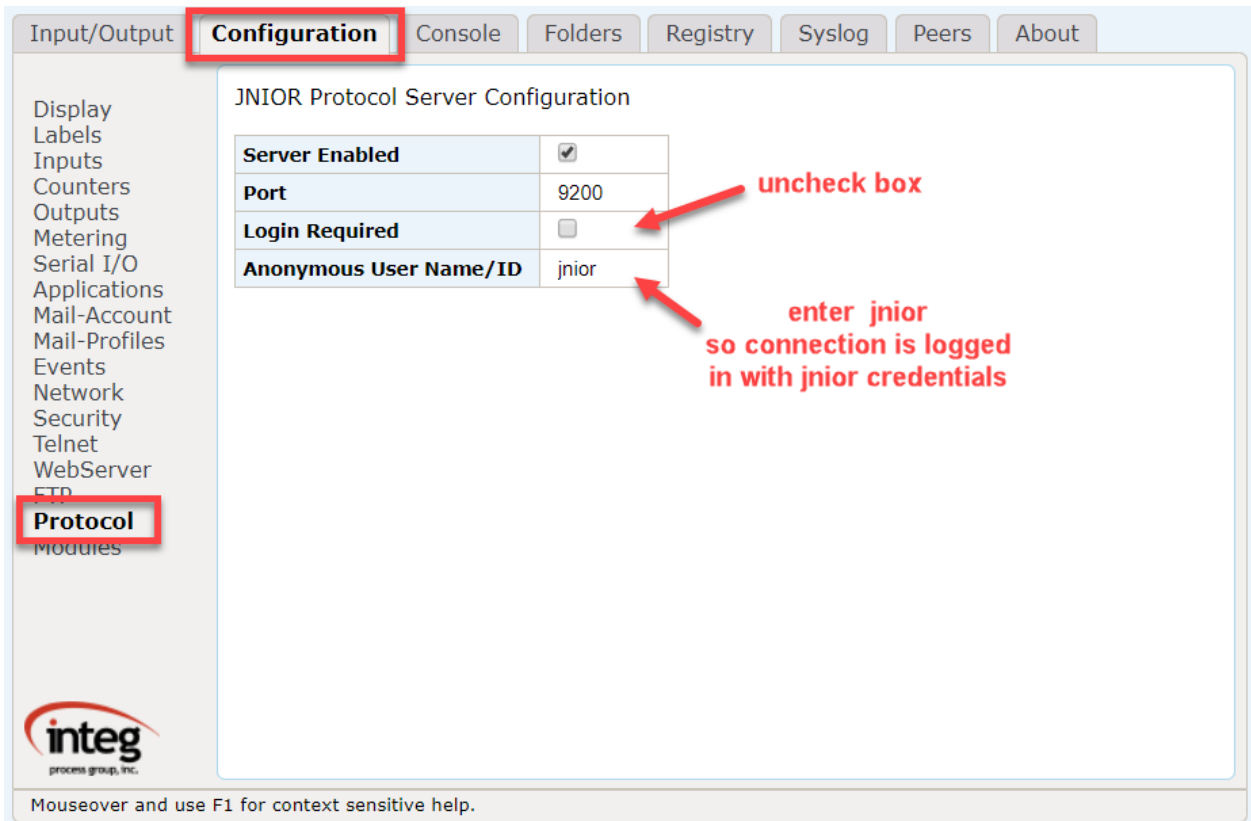
The JNIOR login can be disabled on both the JNIOR Series 4 and the older JNIOR Series 3 via the JNIOR web page. Both methods are described below since each JNIOR Series uses a different web page.

JNIOR Series 4

The JNIOR Series 4 web page can be launched by going to the Beacon Tab in the JNIOR Support Tool and 'right-clicking' on your JNIOR and going to Tools – Open Web page.

When the web page opens, go to the Configuration tab and then the Protocol web page down the left side. You will need to uncheck the Login Required box and enter jnior as the Anonymous User Name/ID to be used for the Christie connection.

Reboot the JNIOR.

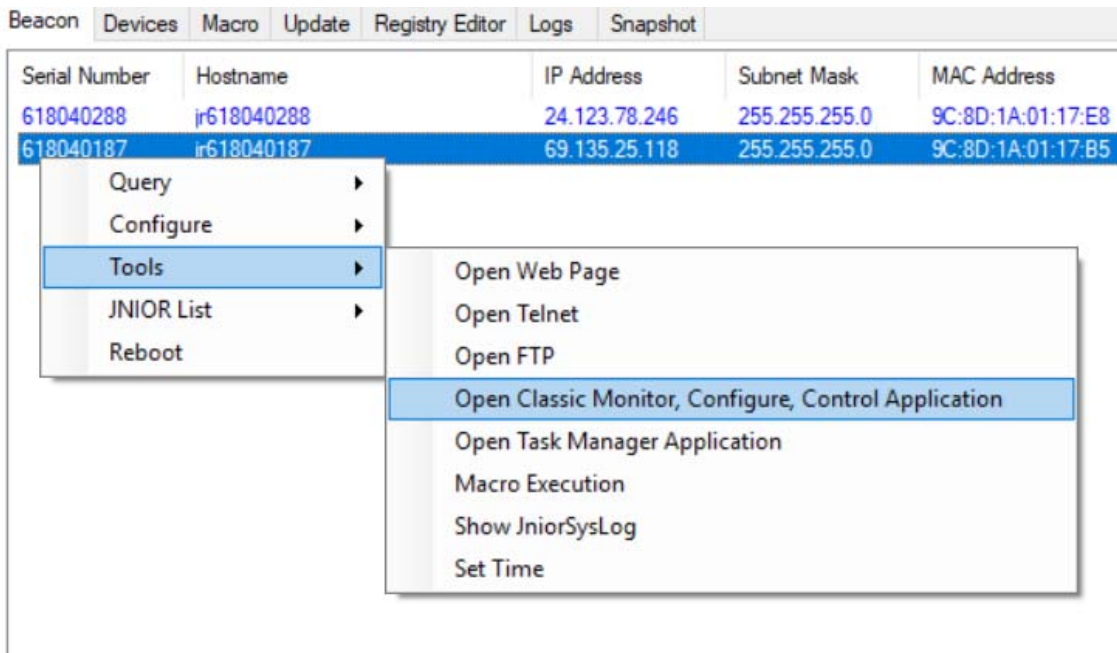


JNIOR Series 3

For the JNIOR Series 3, the web page is a Java Applet that when loaded from the JNIOR is run in a browser. **For security reasons, all browsers have stopped Java applications from running.** To launch the web page for the JNIOR Series 3, you must launch a version that is installed with the JNIOR Support Tool. You should install the latest JNIOR Support Tool available on our website to make sure you have the feature.

To launch the Java application of the Series 3 web page running on your computer (and NOT in a web browser), you ‘right-click’ on your JNIOR go to Tools – Open Classic Monitor, Configure, Control Application as shown below.

NOTE: You will still need Java on your computer. You can get it from java.com



The user can disable the login from the main JNIOR web page by going to the Configuration tab and then the Misc tab and unchecking the box as shown in the screen picture below.

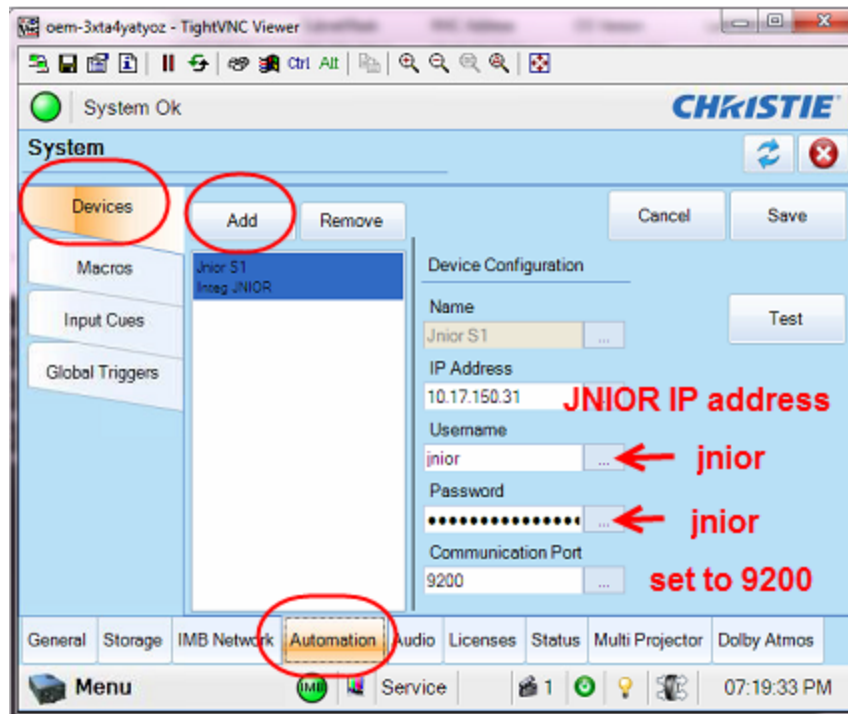
The screenshot shows the JNIOR Configuration interface. The 'Misc.' tab is selected. A table lists various configuration items. Three callout boxes provide instructions: 1. 'Do not change the JNIOR Protocol port number. Leave it as 9200 (the default setting).' points to the 'JNIOR Server port number' field. 2. 'Uncheck the box for "JNIOR Server login enabled", click Save Configuration shown above.' points to the 'JNIOR Server Login enabled' checkbox. 3. 'Enter 128 as the value for the user' points to the 'JNIOR Server Anonymous User' field.

| Title | Value |
|---|-------------------------------------|
| General | |
| Device Description | JNIOR |
| ServiceHost IP | |
| Enable logging to the /jniorio.log file | <input checked="" type="checkbox"/> |
| Compression Enabled | <input type="checkbox"/> |
| NTP Server | clock.isc.org |
| JNIOR Protocol | |
| JNIOR Server port number | 9200 |
| JNIOR Server Login enabled | <input type="checkbox"/> |
| JNIOR Server Anonymous User | 128 |
| MODBUS | |
| Enable Modbus Server | <input checked="" type="checkbox"/> |
| Modbus Server Port | 502 |
| Modbus Server Login enabled | <input type="checkbox"/> |

Using the JNIOR Login with the Christie IMB

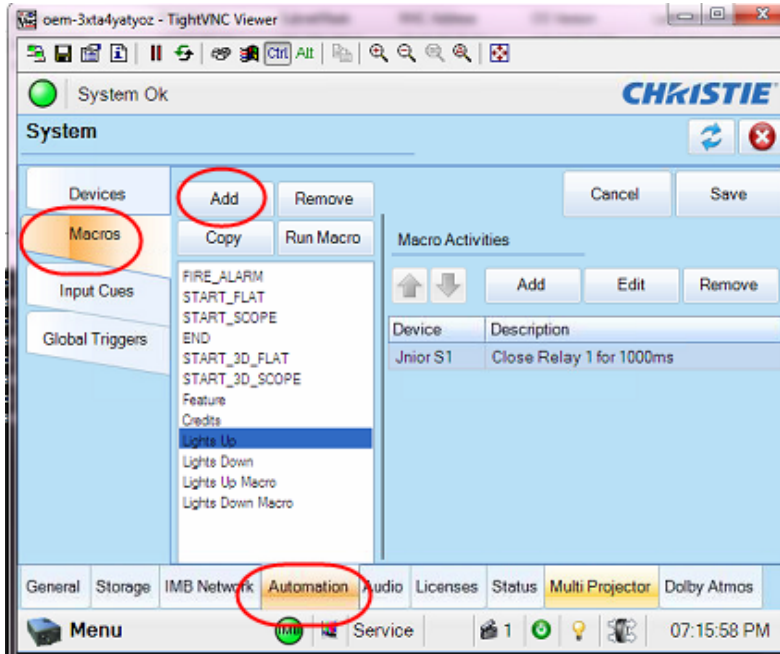
If you want to use the JNIOR login, you will need to enter the JNIOR IP address, the default username (jnior) and password (jnior) and the JNIOR protocol port (9200).

Do NOT disable the JNIOR login on the JNIOR.

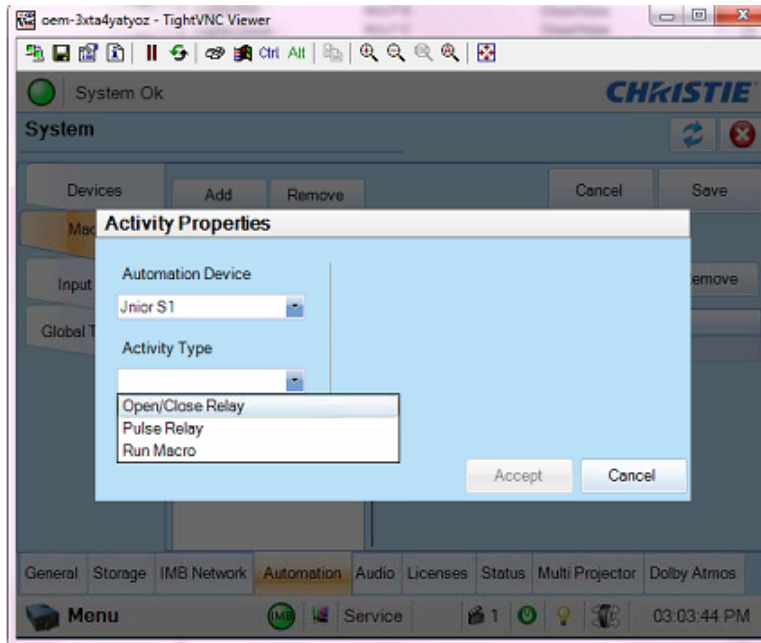


Building Macros on the Christie IMB

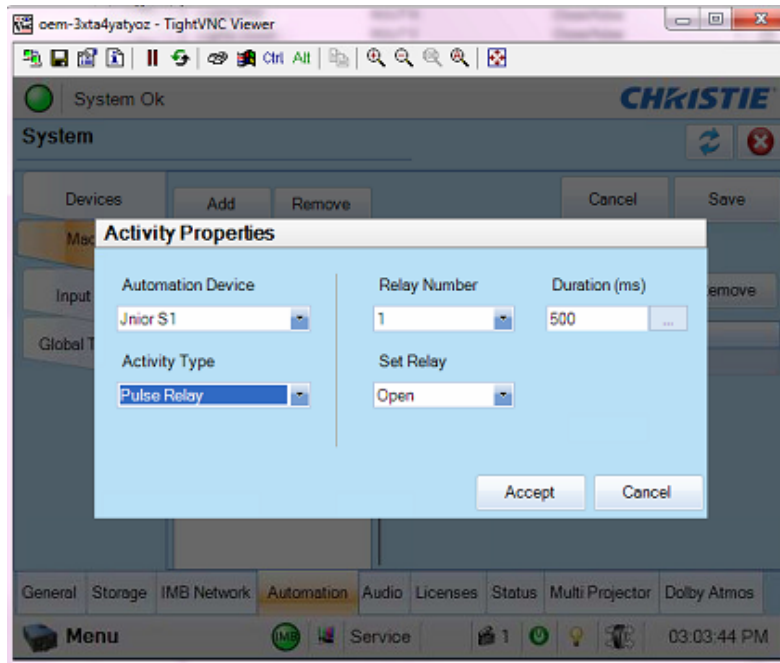
After you have added the JNIOR to the Christie IMB, you must now build ‘macros’ on the Christie to control the JNIOR relays and/or to trigger macros on the JNIOR. Go to the Automation section and click on Macros in the Christie IMB set-up software.



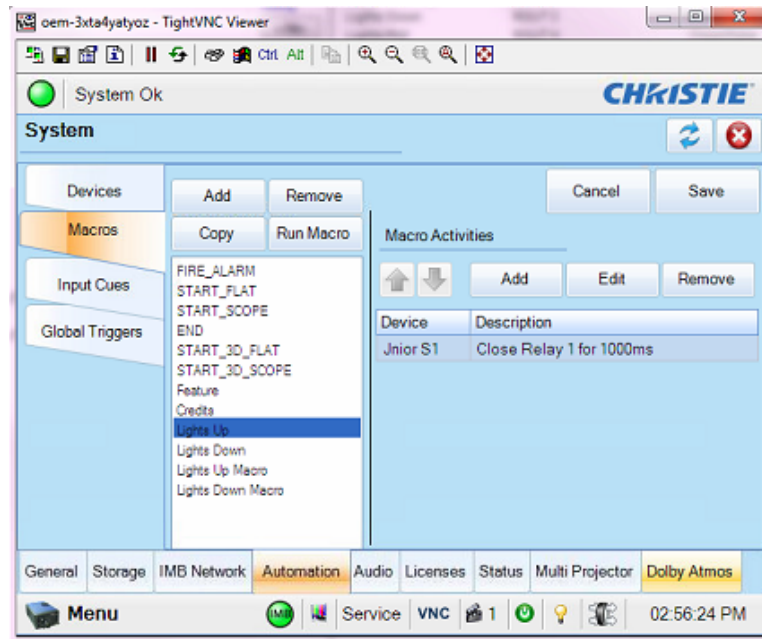
As shown below, you can Add an action to a macro on the Christie IMB that can Open/Close a relay on the JNIOR, Pulse a relay on the JNIOR, or Run a Macro on the JNIOR.



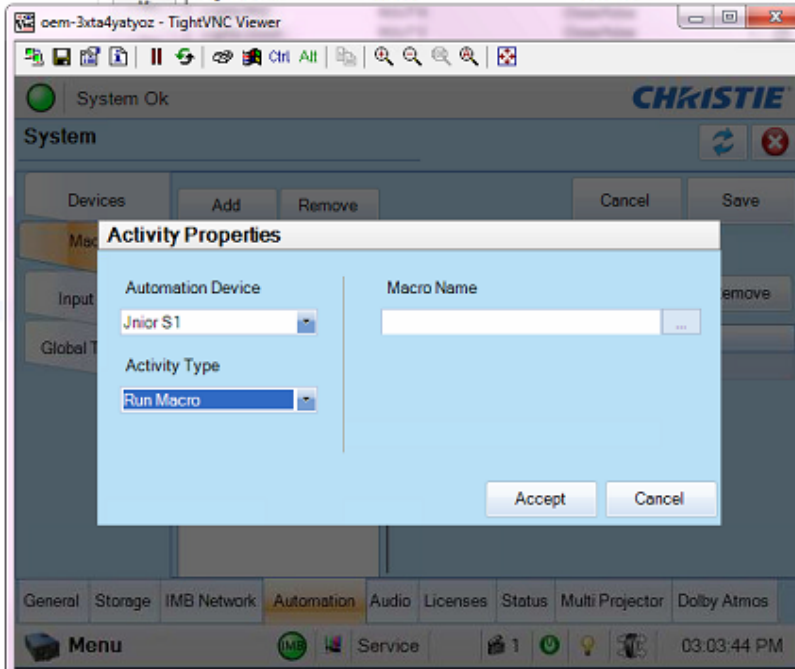
Below is an example of the Pulse Relay command. You must select the relay number, whether you want to Open or Close the relay and how long to pulse it on (or off).



Below is what the Christie IMB macro looks like that pulses relay output number 1 on the JNIOR for 1000 milliseconds.

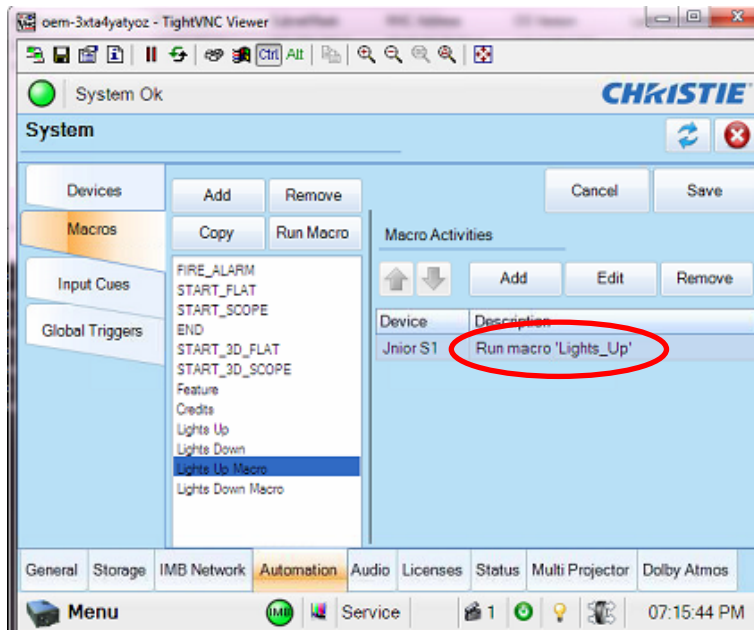


You can also add an action to a macro on the Christie IMB that will trigger a macro on the JNIOR. Select the Run Macro command and enter the name of the macro on the JNIOR to run.



Below is an example of a macro on the Christie IMB that has the action to run a macro on the JNIOR called Lights_Up

NOTE: The Christie IMB does NOT like spaces in the macro names. All of the macros on the JNIOR must not have any spaces. Please eliminate any spaces in the macro names or replace them with an underscore ‘_’

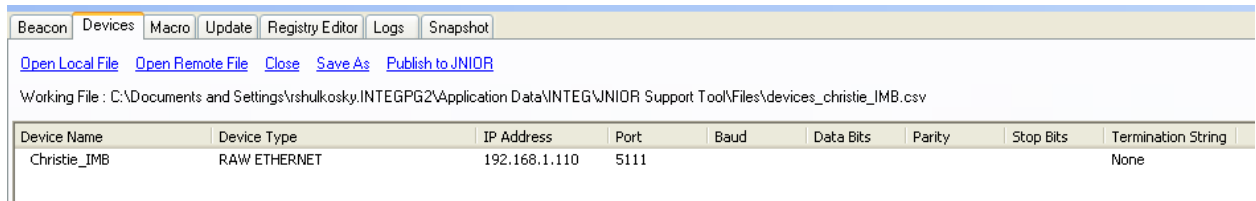


Controlling the Christie IMB from the JNIOR

If you want the JNIOR to be able to Start and Stop the Christie player, then you have to do the following.

Configure the Christie IMB as a RAW ETHERNET device in the Cinema devices file. The JNIOR will communicate with port 5111 on the Christie IMB.

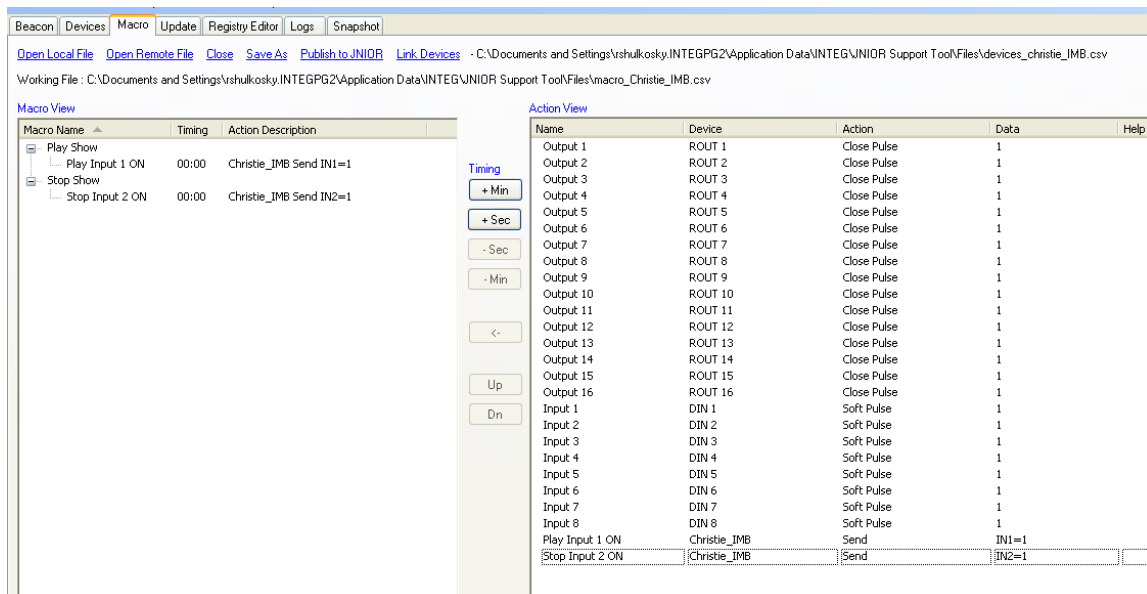
NOTE: The termination string in the example below is set to ‘None’. Please check whether your Christie set-up needs a termination string or not.



Link your Devices file to the Macro file and then add actions that will send the appropriate string of text to the Christie. In the example below, the actions to send the strings IN1=1 and IN2=1 were created and added to two different macros.

NOTE: You will have to configure the Christie IMB to recognize these two strings so that when the Christie receives IN1=1 it will Play the Show and when it receives IN2=1 it will Stop the Show.

NOTE: You can select any text that you want for these actions. IN1=1 and IN2=2 are just examples. The strings are only sent to port 5111 when the macro is executed.



You will then have to ‘trigger’ the appropriate macro to get the correct message sent to the Christie IMB.

For example, if you want digital input 1 on the JNIOR to send the message IN1=1 to the Christie when the input goes ‘on’ (from low to high), then you must configure the Trigger Registry Key in the Cinema program for input 1. As shown below, you replace the word ‘none’ with the name of the macro that you want executed when the digital input goes ‘on’.

In the above example, we want to execute the Play Show macro, so we enter Play Show into the Trigger Input 1 registry key.

NOTE: The screen picture below shows how to edit the Registry Keys in the old JNIOR web page. You can also do this functionality in the Registry Editor tab in the JNIOR Support Tool.

