

## Installing and Testing Cinema.JNIOR

Last Updated September 23, 2010

The Cinema.JNIOR program is used to execute macros stored on the JNIOR. The macros can control the JNIOR I/O and external devices (projectors, serial devices, etc.) via the Ethernet and JNIOR serial ports. The Cinema.JNIOR software is loaded on the JNIOR by using the JNIOR Support Tool. The macros and devices are configured by also using the JNIOR Support Tool. Please see the JNIOR Support Tool Manual and Cinema.JNIOR manual for more details.

### Installing Cinema.JNIOR

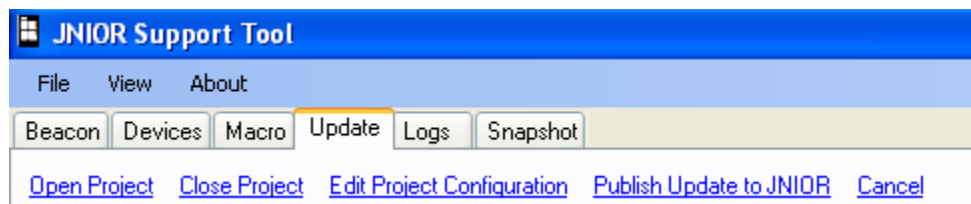
The Cinema.JNIOR software is distributed as a ZIP file that is an 'update project' that works with the JNIOR Support Tool. The zip contains a 'loader' program (.ldr file) with various load and configuration steps and the Cinema.JNIOR software and any other required software.

#### NOTES:

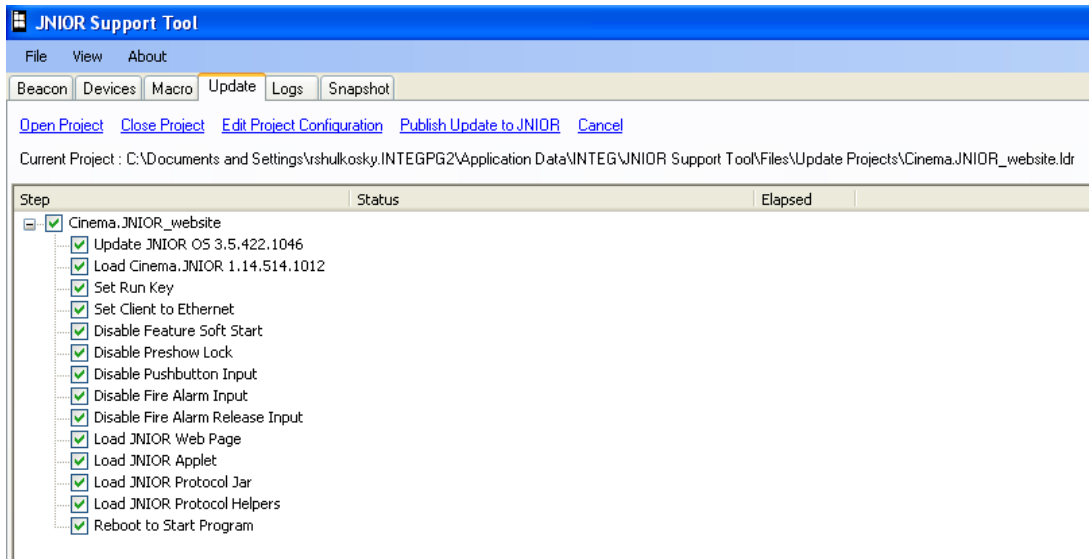
**When downloading the installation project from our website, after you click on the download 'arrow', please select SAVE, do not select OPEN, because you want the file downloaded as a zip file.**

**Do NOT unzip the zip file. Please save it to your computer and let the JNIOR Support Tool unzip the file.**

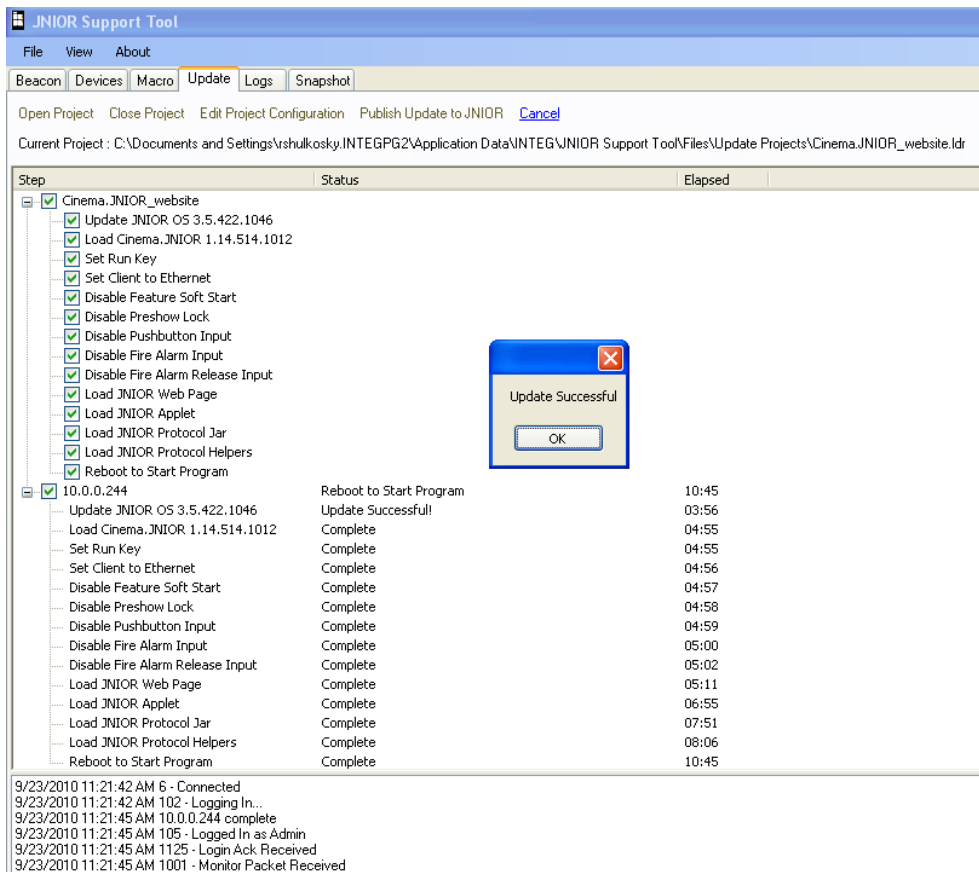
To install the Cinema.JNIOR software, go to the Update tab in the JNIOR Support Tool and click on the Open Project link. Then navigate to wherever you saved the update project ZIP file supplied by INTEG and select the ZIP.



As shown in the screen shot below, after you select the ZIP file and the JNIOR Support Tool 'unzips' it, the Cinema.JNIOR installation project contains several steps. **To use the latest version of Cinema.JNIOR, you must update your JNIOR to JNIOR OS version 3.5.422.1046.** The other steps load Cinema.JNIOR and change 'default' settings so that none of the inputs act as 'triggers' for specific actions. Instead, you will be able to trigger your macros by sending the macro name or defining inputs as triggers. Please see the Cinema.JNIOR manual for additional details.



Please leave all the steps ‘checked’ for your initial installation (you can ‘uncheck’ various steps once you understand why you would do that) and click on Publish Update to JNIOR. A pop-up window will be displayed listing all the JNIORs found via Beacon. Select your JNIOR, or if it is not displayed you can type in your IP address. The project will run and will look like the following screen shot upon a successful update.



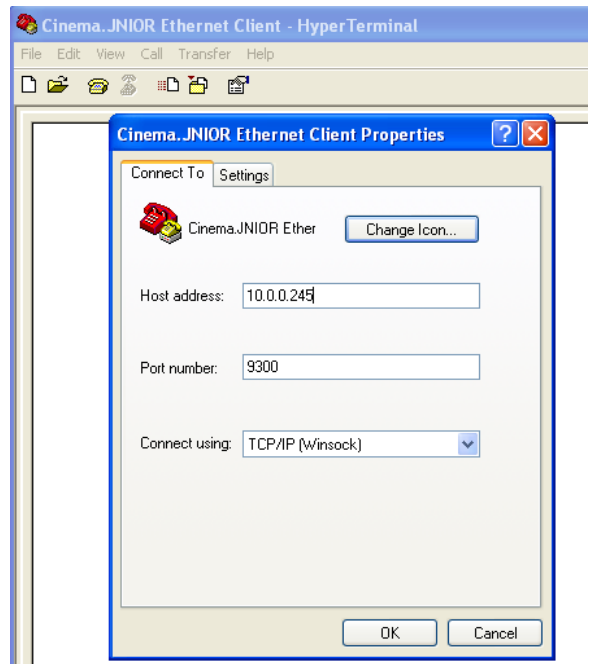
**NOTE:**

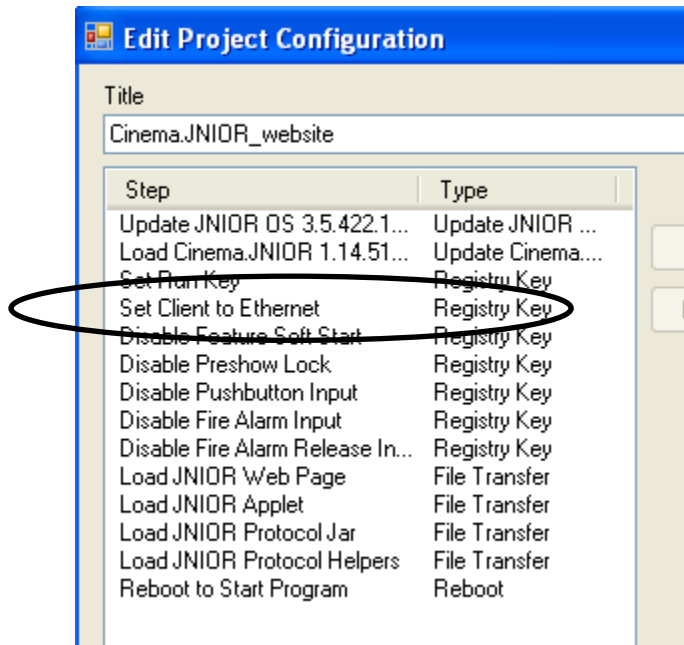
**The next time you want to run the Update Project for another JNIOR, when you click on Open Project, you can just select the Cinema.JNIOR\_website.ldr file. You do not need to select the ZIP file again.**

**Testing Cinema.JNIOR**

After you create a macro using the JNIOR Support Tool and ‘publish’ (transfer) it to the JNIOR, you can run your macro using a HyperTerminal session.

One of the configuration Steps used when loading the Cinema.JNIOR program was to set the “client” interface as an Ethernet connection over port 9300. This is shown in the screen shot below.





With this setting, you can configure a HyperTerminal session to communicate with Cinema.JNIOR on your JNIOR as follows.

Configure your Properties to use a TCP/IP (Winsock) connection, enter your JNIOR IP address and enter the port number as 9300.

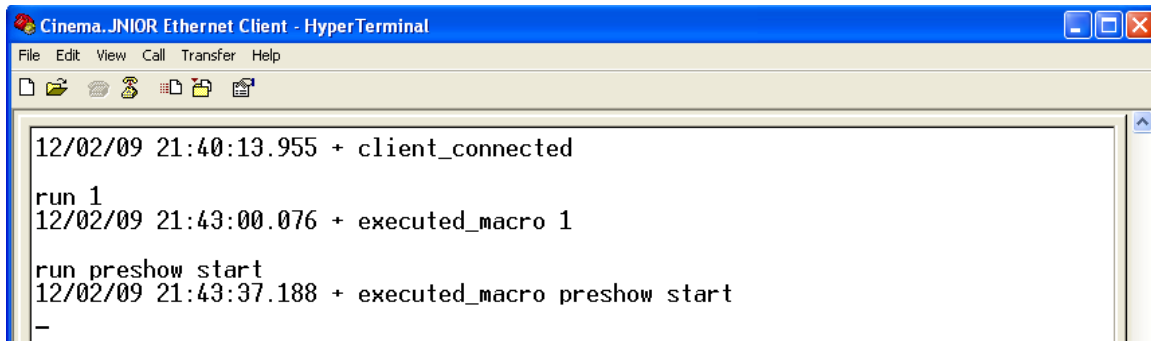
When you click on the 'phone' or hit enter to 'connect', the JNIOR should send the message 'connected'. You can then execute a macro by typing:

**run [macro name]**

or

**run [macro number]** where the macro number is its order in the macro list

Cinema.JNIOR will execute the macro and send a message that it was executed. See the screen shot below.



```
Cinema.JNIOR Ethernet Client - HyperTerminal
File Edit View Call Transfer Help
12/02/09 21:40:13.955 + client_connected
run 1
12/02/09 21:43:00.076 + executed_macro 1
run preshow start
12/02/09 21:43:37.188 + executed_macro preshow start
-
```

Please contact INTEG via e-mail at [INTEGsales@integpg.com](mailto:INTEGsales@integpg.com) or via phone at 724-933-9350 extension 20 with any questions.