

Event Manager Manual

INTEG Process Group, Inc.

2919 East Hardies Rd, First Floor
Gibsonia, PA 15044

PH (724) 933 - 9350
FAX (724) 443 - 3553

www.integpg.com
support@integpg.com
sales@integpg.com

© 2020 INTEG Process Group, Inc.
All Rights Reserved

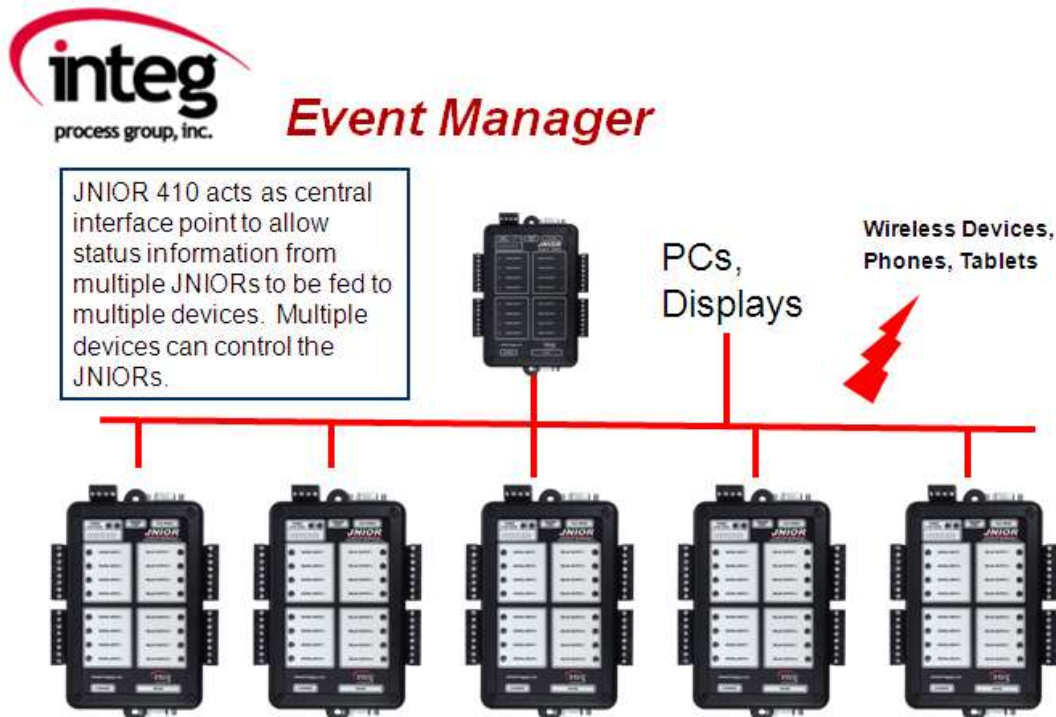
Last updated on: December 18, 2020

The following information describes how to configure and utilize the Event Manager software that allows you to monitor and manage multiple theatre auditoriums from a central location.

Please contact INTEG via e-mail at support@integpg.com or via phone at 724-933-9350 with any questions.

Overview

Event Manager is an application that interacts with JNIORs running the Cinema application using a **Series 4 JNIOR** as the host. Event Manager allows the user to view 'status' information about each auditorium by displaying it on a central PC using the PC application and in web browsers running on a PC, tablet, iPad, phone, etc. Event Manager can also be used to trigger macros on the JNIOR. These macros can be very simple or contain multiple actions.



Within each macro on the JNIOR, the user will add the 'status' messages that are sent to the Event Manager application. The status messages added to a macro file contain the format

Column Name = Message

In Event Manager, you will define the Column Names. In the Macro file, you will define the Message. The Action defined in the Macro tab will be for the internal device called CINEMA_MANAGER and there will be a 'Send' action. The data field will contain the

Column Name = Message. For example, the macro could send Lights = Low to the Event Manager application. This would cause the word Low to be displayed in the column called Lights. **You can also send multiple messages in the same Send action.**

Event Manager also gives the user the capability to monitor and manage an intermission (**can be any timed event**) being controlled by the JNIOR. The length of the intermission can be defined and then macros can be defined to extend, shorten or stop the intermission timer. When the intermission timer completes, an end of intermission timer macro is executed.

To implement Event Manager, the user will need:

- the latest JNIOR Support Tool (version 6.2.313.756 or greater)
- the latest Cinema.JNIOR (version 2.26.718.1413 or greater) for Series 3 JNIORe.
- the latest Cinema.JAR (version 2.0.4.242 or greater) for Series 4 JNIORe.
- the Event Manager PC application (version 2.4.0.376 or greater)
- the XChange application (version 1.1.0.548 or greater) running on host JNIORe

Any JNIORe connecting to the host JNIORe will only need the Cinema application. Cinema.jar for Series 4 JNIORe, and Cinema.jnior for Series 3 JNIORe.

The host JNIORe will need the XChange application to act as the host for the Event Manager application.

Event Manager

Event Manager PC application is distributed via an installation project (.msi file). Double click on the msi file to install the program on the PC. After the program is installed, you can launch the program by double-clicking on the short cut icon placed on your desktop or by going to the Start – All Programs – INTEG – Event Manager and selecting the Event Manager program.

After you launch Event Manager, the following screen will be displayed. The first time you launch Event Manager, you will need to configure the IP address of the host JNIOR that the PC application will connect to and you will also need to configure the columns for data to be displayed on the screen.

NOTE: The number of JNIORs connected to the host JNIOR will be displayed in the lower left corner. This should also be the number of JNIORs (rows) displayed in the PC application. The lower right corner will display the session ID when the PC application has successfully connected to the host JNIOR.



Creating Your Data Columns

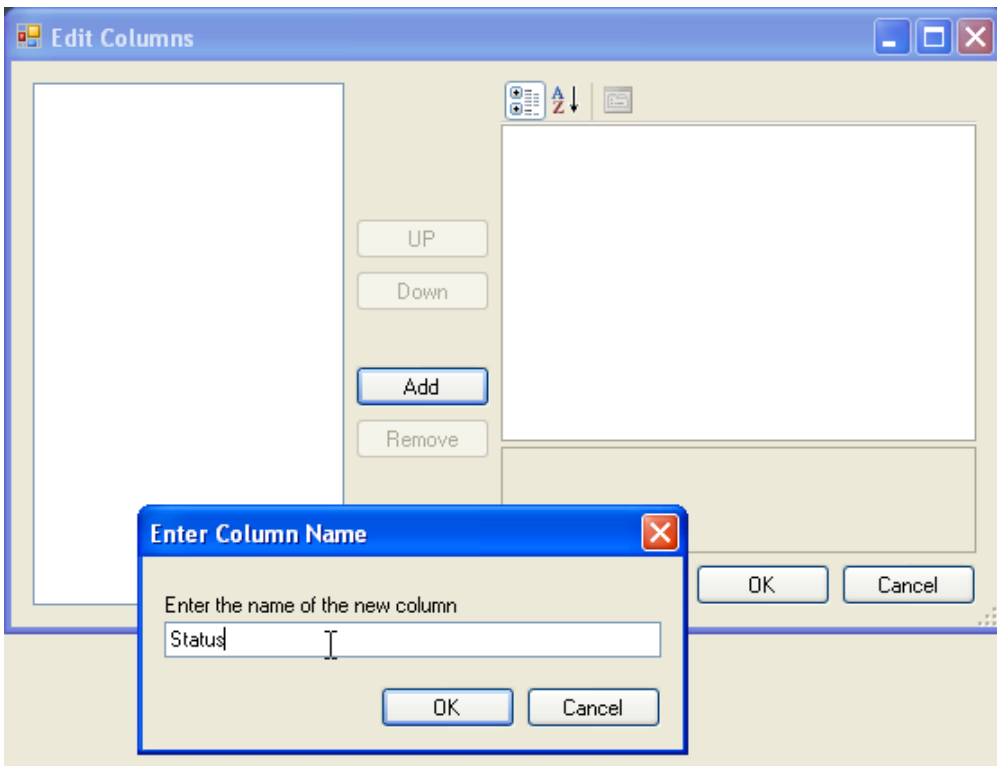
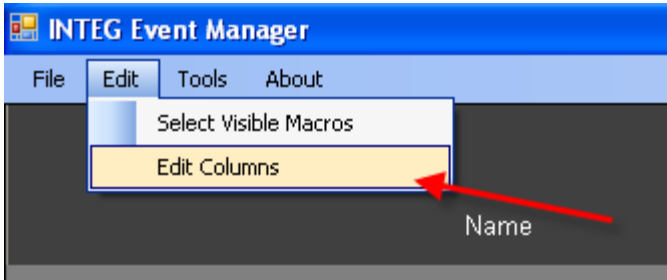
You can create any number of columns you want and they can have any title you want. **It is recommended that you have columns titled ‘Status’ and ‘Alert’ because Event Manager will automatically put certain messages into these columns. If these columns do not exist, the messages will go to the Miscellaneous column.** For example, ‘connected’ and the ‘intermission timer value’ will go into the Status column. The name of the macro started and the macro completed message generated by Cinema will go into

the Alert column. You can also add your own messages to these columns using the Status = message or Alert= message format.

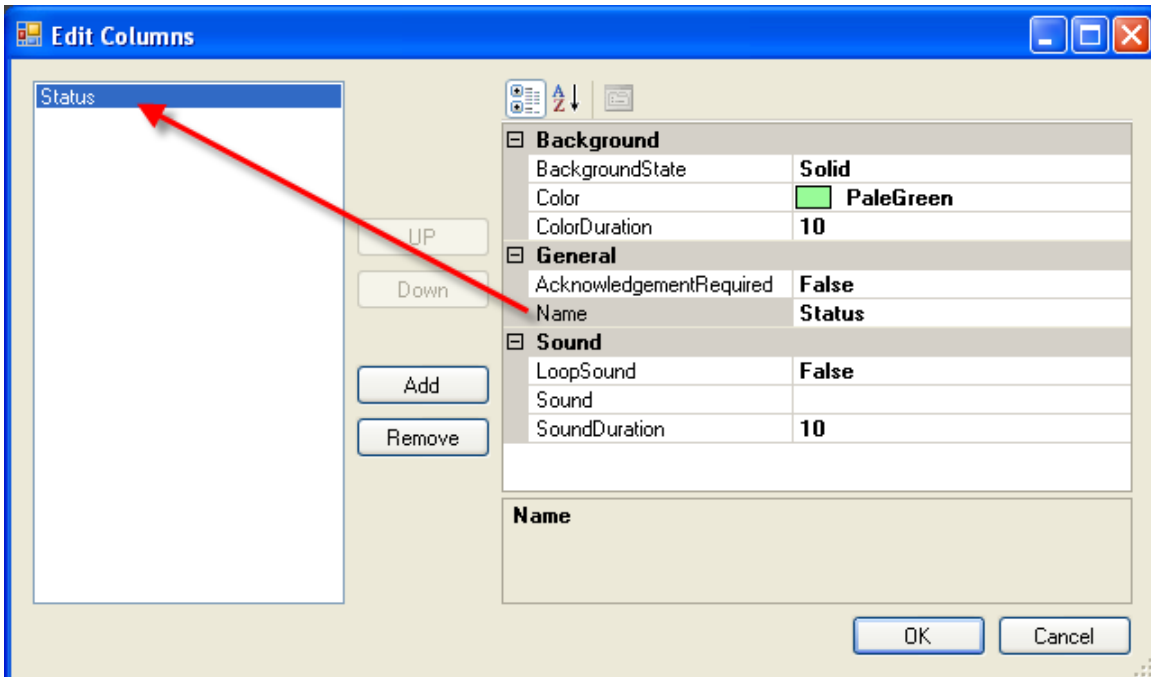
Cinema will put any message that comes to Event Manager with a column name that does not exist or a message that does not have a column name (default ones from Cinema) into the Miscellaneous column.

If you give the column name two parts (the two names are separated by an underscore), Event Manager will create two rows in the PC display. For example, Status will be a one row header, whereas Projector_Lamp will be displayed as a two row header. You can have multiple headers under one main header. For example, you could have Projector_Lamp, Projector_Dowser, Projector_Macro.

When you select the Edit Columns option under the Edit pull down, the following pop-up will be displayed. If you click on the Add button, a pop-up will be displayed to allow you to enter your column name.



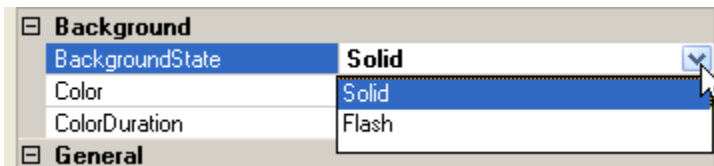
After you type in your column name and click OK, the following pop-up will be displayed to allow you to set various characteristics about the column.



Background

The Background set-up allows you to change the color of the cell when the ‘message’ for this column is first received. The cell will change to the color you have selected and remain that color for the duration that you have set. The default color is Pale Green and it will stay that color for 10 seconds.

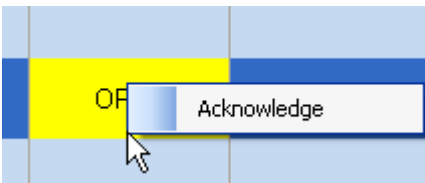
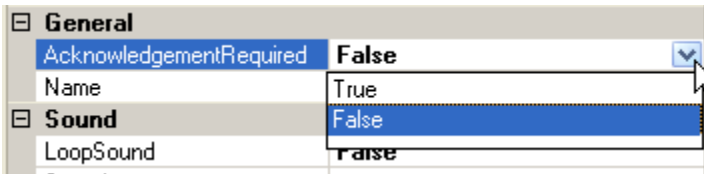
The Background State allows you to have the color be solid or flash for the time duration.



General

In the General set-up, you can change the name of the column and you can also set if the message (color or alarm sound) needs to be ‘acknowledged’. If you set the Acknowledgement Required to TRUE, then when you ‘right-click’ on the cell in Event Manager, an Acknowledgement pop-up will be displayed. The color will remain or the sound will continue to play until the acknowledgement pop-up is clicked on.

When you click on ‘acknowledge’, the color will change to the background shade of blue or gray and the sound will stop playing.

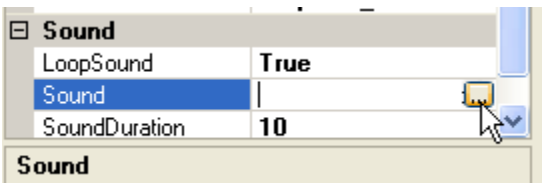


‘Right-click on Cinema Manager page to get Acknowledge pop-up

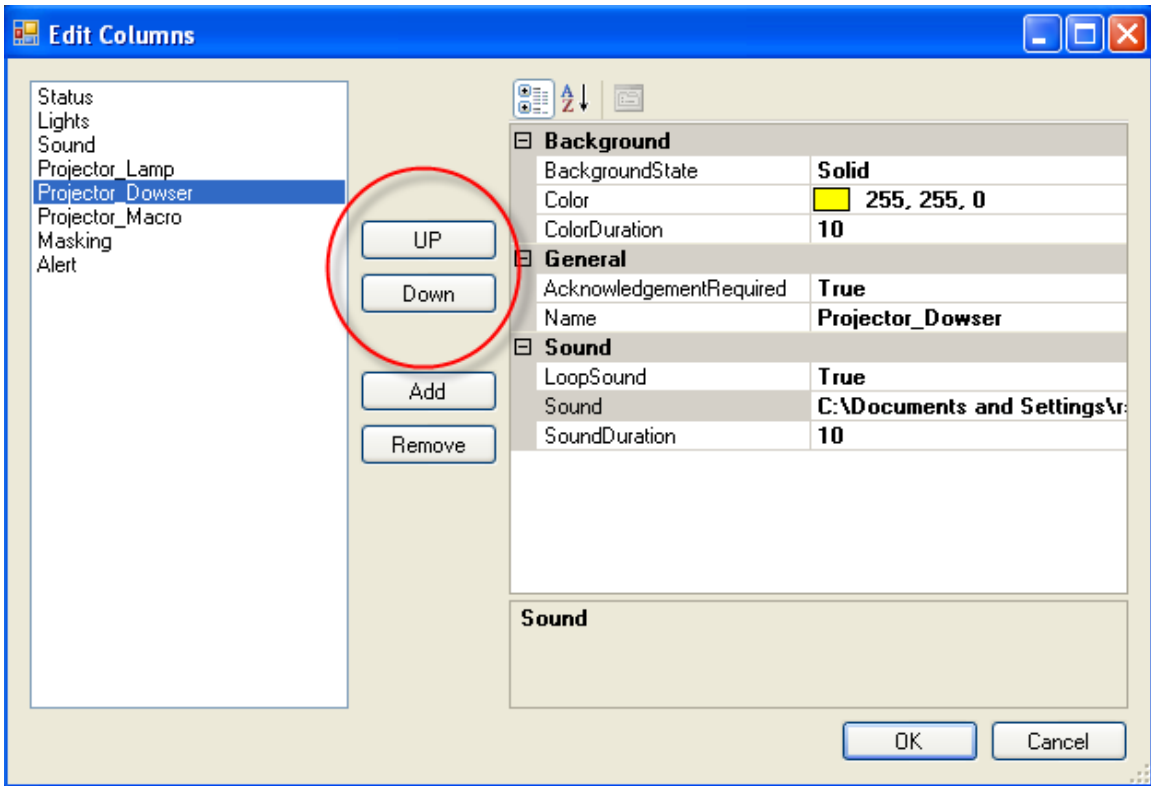
Sound

In the Sound set-up, you can select a sound to be played when the message is first displayed. You can add any ‘wav’ files that you want to use. Click in the Sound field and then click on the ‘three dots’ and a file selection box will be displayed. If you change the Loop Sound from false to true, the sound will be played over and over for the Sound Duration entered. The default duration is 10 seconds.

If you selected Acknowledgement Required (in General box), the sound will play until the ‘acknowledgement’ pop-up is clicked on in the cell in Event Manager.



After you have configured your columns, you can rearrange the column order on the display by using the Up and Down buttons in the middle of the configuration box as shown below.



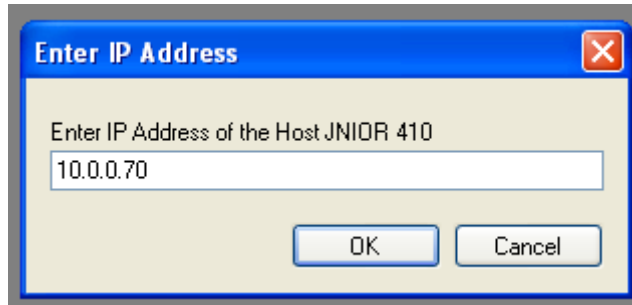
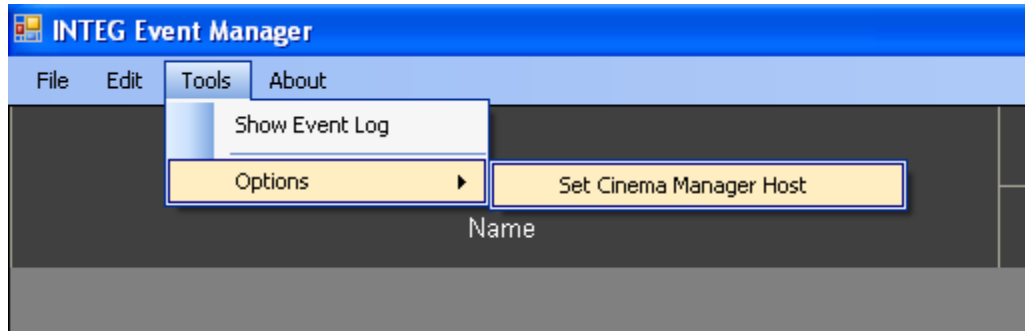
When you are done creating your columns and your JNIORS have connected to Event Manager and started sending messages, you can have a variety of colors as shown below.

Name	Status	Lights	Sound	Projector					
				Lamp	Dowser	Macro	Masking	Alert	Miscellaneous
CM_Auditorium_2	Preshow	Lights High	Nois Spk	Lamp On	Dowser Open	Preshow	Flat	Lights Dim Success	
CM_Auditorium_3	Preshow	Lights High	Nois Spk	Lamp On	Dowser Open	Preshow	Scope	Preshow Start Failed	
CM_Auditorium_4	Preshow Done	Lights High	Spk		Dowser Closed	Move	FLAT	Lights Dim Success	

Host JNIOR – Event Manager Host

All of the JNIORs will connect to a host JNIOR running the XChange software. The XChange software is licensed by INTEG.

You will need to enter the IP address of the host JNIOR into the Event Manager PC application. As shown below, you will go to Tools – Options – Set Cinema Manager Host and enter the IP address of the host JNIOR.



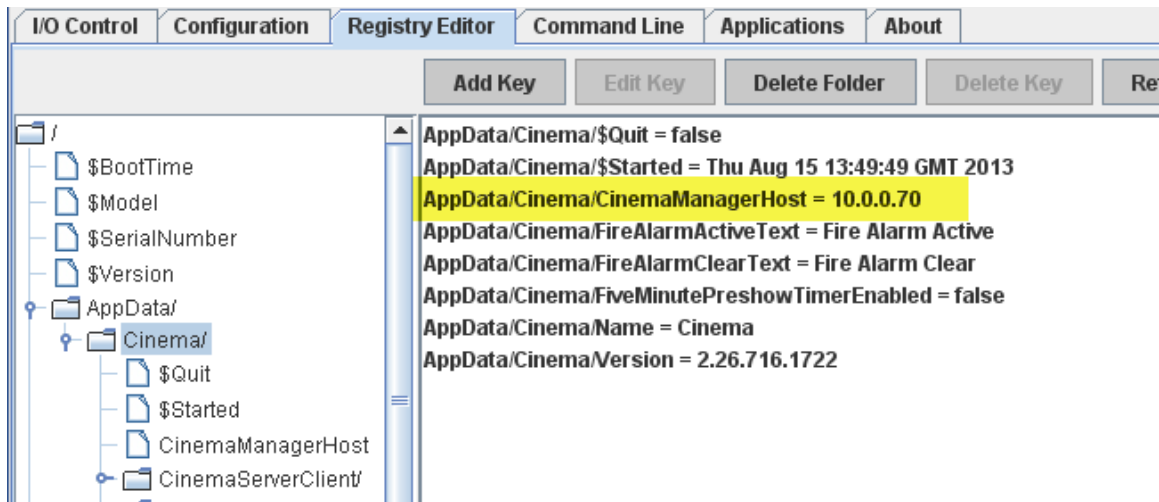
NOTE: All of the JNIORs with their CinemaManageHost registry key set will connect to the host JNIOR and all of the Event Manager PC applications and web based devices will also connect to the host JNIOR.

JNIOR Configuration

Please load the proper version of Cinema on your JNIOR using the JNIOR Support Tool. After the JNIOR is rebooted to start the new version, open the main JNIOR Web page, go to the Registry Editor tab, click on the AppData folder and then the Cinema folder and edit the CinemaManagerHost key. **Enter the IP address of the host JNIOR that is running the XChange application.** Below is a screen picture of the CinemaManagerHost registry key.

NOTE: Once you enter the IP address of the JNIOR hosting the XChange application, you must reboot.

DO NOT PULL THE POWER. Go to the About tab and click on the Reboot button so that the JNIOR will save the configuration change properly.



NOTE: If you change the Hostname for a JNIOR, it will not change in Event Manager until you close and re-launch the Event Manager PC application.

As shown below, each JNIOR will connect to Event Manager and the message ‘connected’ will show up in the Status column.



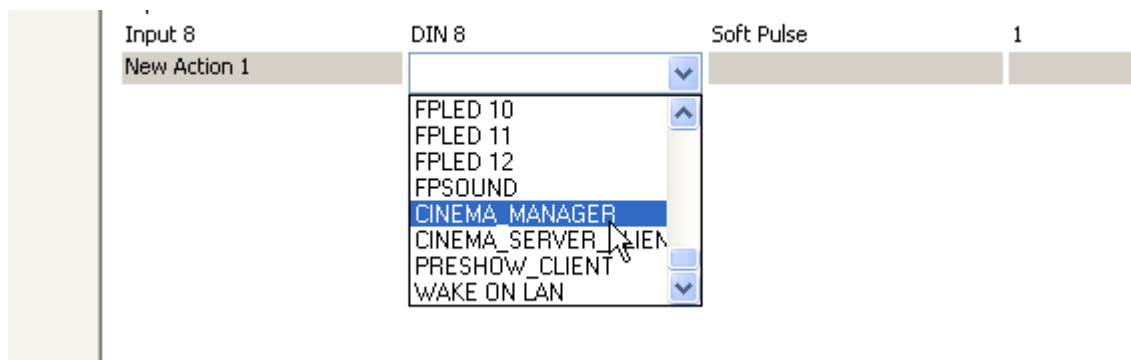
You can ‘left-click’ on a JNIOR in the NAME column and drag it up or down in the list to change the order of the JNIORS. The new order will be remembered by Event Manager. Below is a picture of a re-ordered list when compared to the previous screen picture.

INTEG Cinema Manager		
File Columns		
Name	Status	Lights
CM_Auditorium_1	Connected	
CM_Auditorium_2	Connected	
CM_Auditorium_3	Connected	
CM_Auditorium_4	Connected	

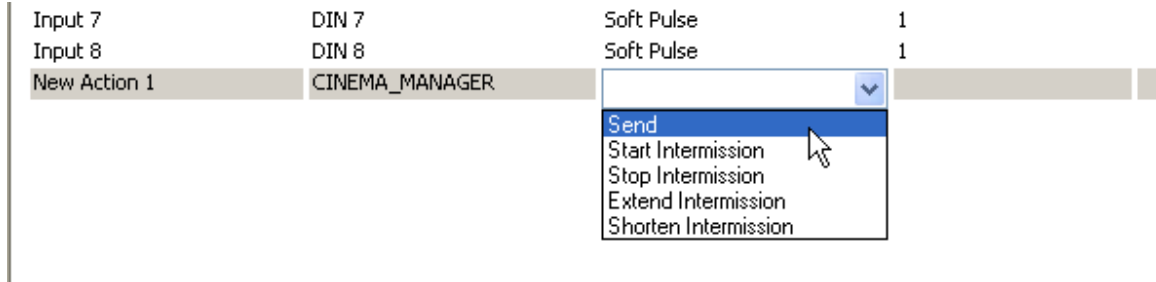
Building your Macros

In order to get status messages in Event Manager, you must build them into your macros so that when a specific action is executed, a message is sent to Event Manager and placed into the appropriate column.

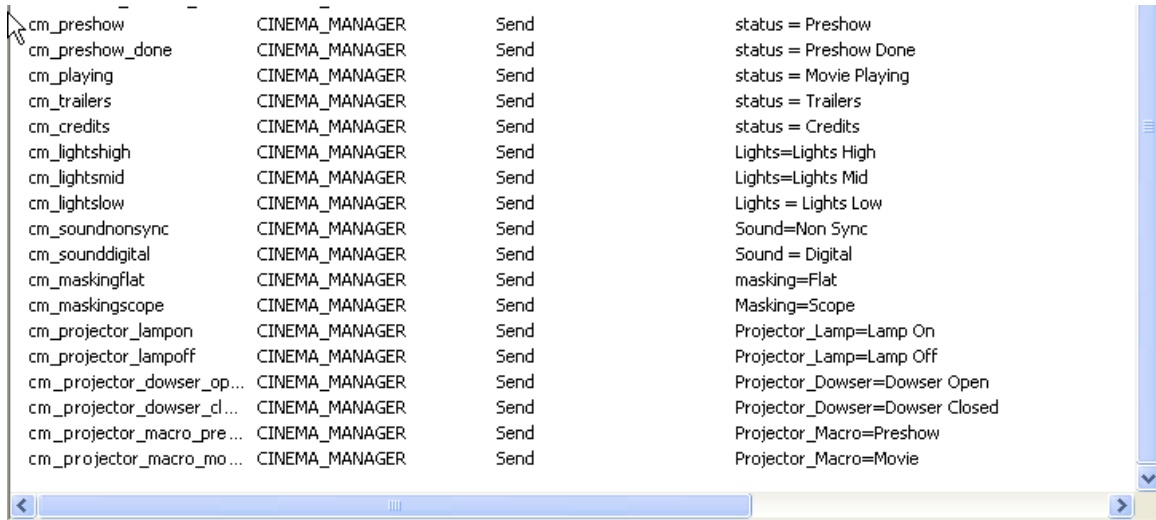
The JNIOR Support Tool has been updated to include a new ‘internal’ device called CINEMA MANAGER. When you add a new device, CINEMA MANAGER is an option you can select as shown below.



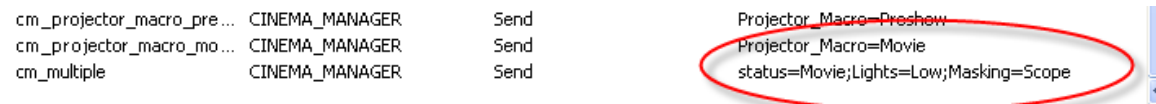
When you select CINEMA MANAGER, you will see the SEND command that sends the data message to the Event Manager application. You will also see several commands associated with the Intermission function that are described later in this document.



You build your actions with as many messages as you want to send. The information in the Data column follows the format Column Name = Message. Below is a screen picture of a variety of ‘status messages’.



You can also send multiple messages as part of one Send.



The following are some typical macros that integrate the Cinema Manager status messages amongst the various actions in a macro. The macro executes the action and sends the associated message.

You can have the timing of the actions and messages spaced out over time.

Macro View

Macro Name ▲	Timing	Action Description
[-] Preshow Start		
cm_preshow	00:00	CINEMA_MANAGER Send status = Preshow
Full Bright	00:01	ROUT 3 Close Pulse 1 sec(s)
cm_lightshigh	00:02	CINEMA_MANAGER Send Lights=Lights High
Preshow Projector...	00:03	Projector Send Macro Preshow
cm_projector_ma...	00:04	CINEMA_MANAGER Send Projector_Macro=P
Projector Lamp On	00:05	Projector Lamp On
cm_projector_lam...	00:06	CINEMA_MANAGER Send Projector_Lamp=L
Projector Open D...	00:07	Projector Open Dowser
cm_projector_do...	00:08	CINEMA_MANAGER Send Projector_Dowser ..
JSD100 Non Sync	00:09	JSD100 Set Input 8
cm_soundnonsync	00:10	CINEMA_MANAGER Send Sound=Non Sync

Or you can have the action and message at the same time interval. The JNIOR will send them out as fast as it can, but placing them at the same time interval may help with keeping the action and message together for viewing purposes.

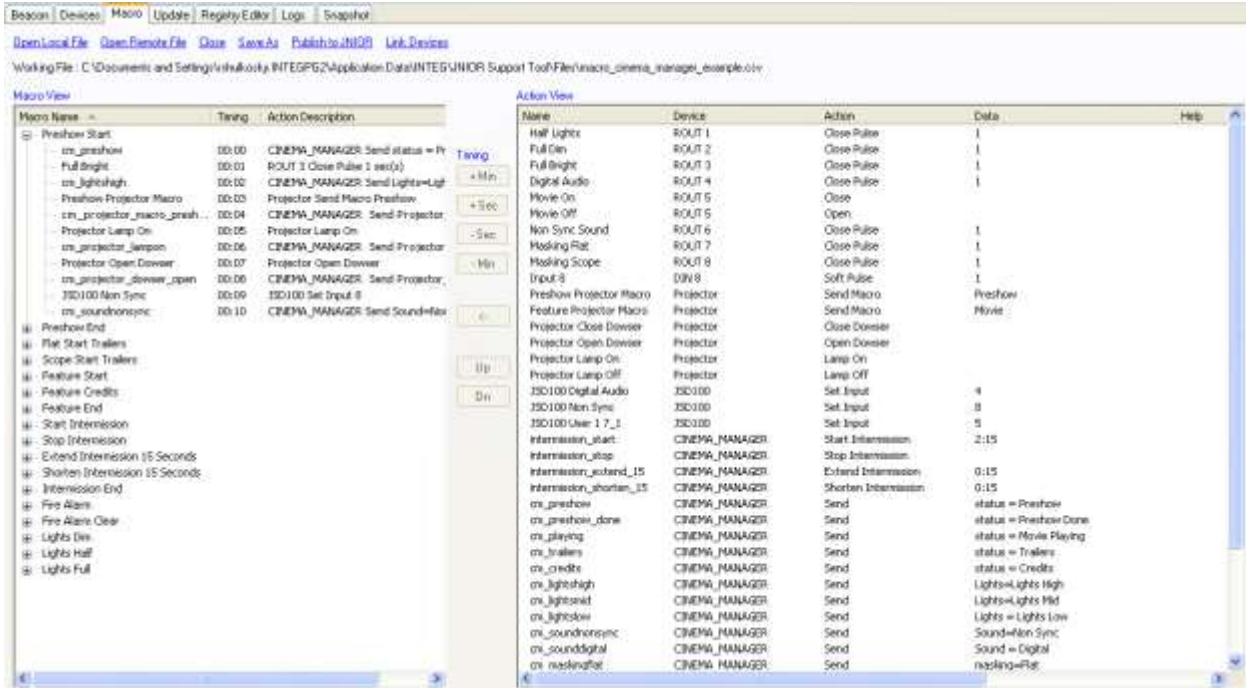
Macro View

Macro Name ▲	Timing	Action Description
[+] Preshow Start		
[+] Preshow End		
[-] Flat Start Trailers		
cm_trailers	00:00	CINEMA_MANAGER Send status = Trailers
Movie On	00:01	ROUT 5 Close
Half Lights	00:02	ROUT 1 Close Pulse 1 sec(s)
cm_lightsmid	00:02	CINEMA_MANAGER Send Lights=Lights Mid
cm_maskingflat	00:03	CINEMA_MANAGER Send masking=Flat
Masking Flat	00:03	ROUT 7 Close Pulse 1 sec(s)
Digital Audio	00:05	ROUT 4 Close Pulse 1 sec(s)
cm_sounddigital	00:05	CINEMA_MANAGER Send Sound = Digital

The macros can be defined as multiple actions as shown above or as simple single actions as shown below.

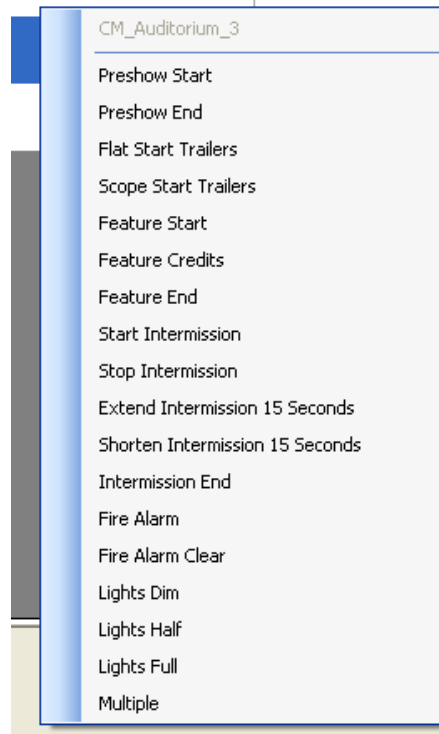
[-] Lights Dim		
Full Dim	00:00	ROUT 2 Close Pulse 1 sec(s)
cm_lightslow	00:01	CINEMA_MANAGER Send Lights = Lights Low
[+] Lights Half		
Half Lights	00:00	ROUT 1 Close Pulse 1 sec(s)
cm_lightsmid	00:01	CINEMA_MANAGER Send Lights=Lights Mid
[+] Lights Full		
Full Bright	00:00	ROUT 3 Close Pulse 1 sec(s)
cm_lightshigh	00:01	CINEMA_MANAGER Send Lights=Lights High

Below is a picture of the entire macro file.



Executing Macros from Event Manager

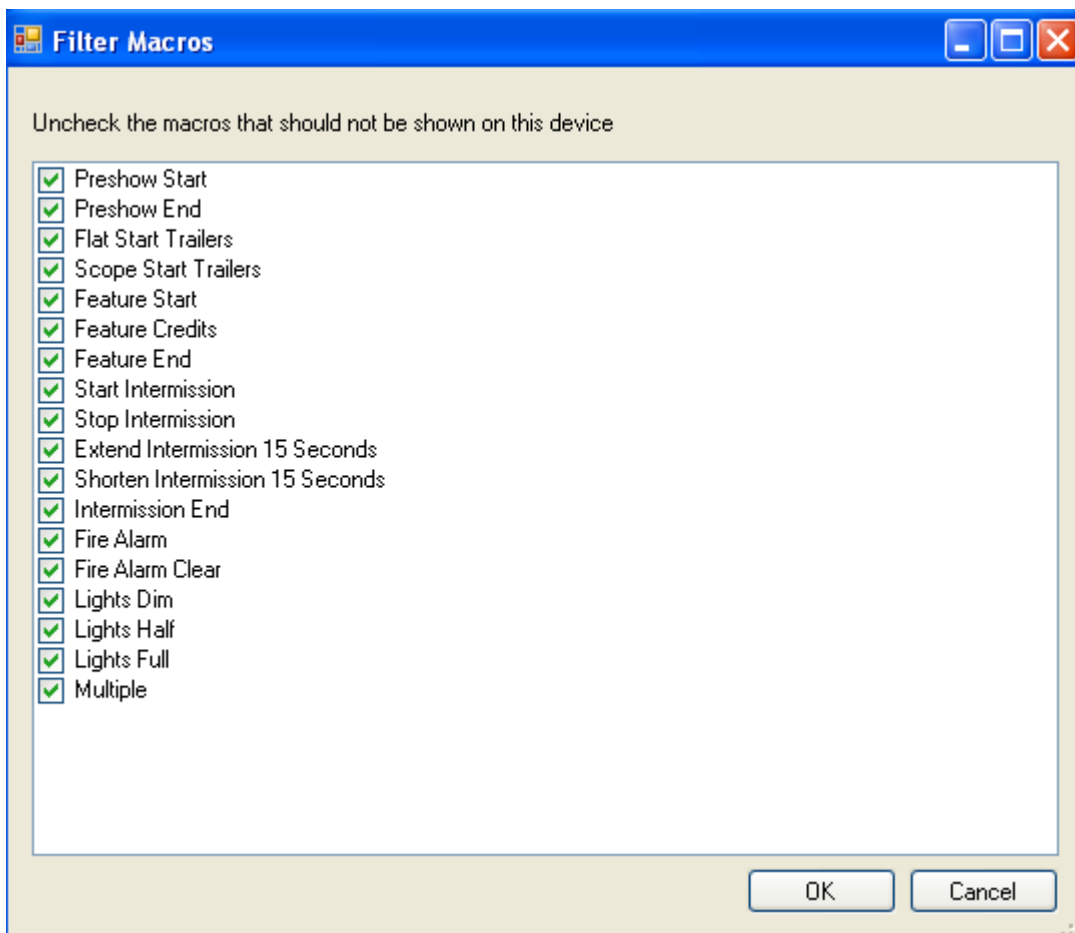
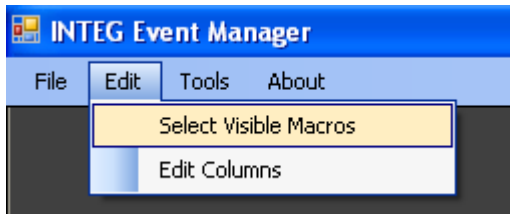
When Event Manager is connected to a JNIOR, all the macros loaded on the JNIOR can be executed from Event Manager by ‘right-clicking’ on the JNIOR name.



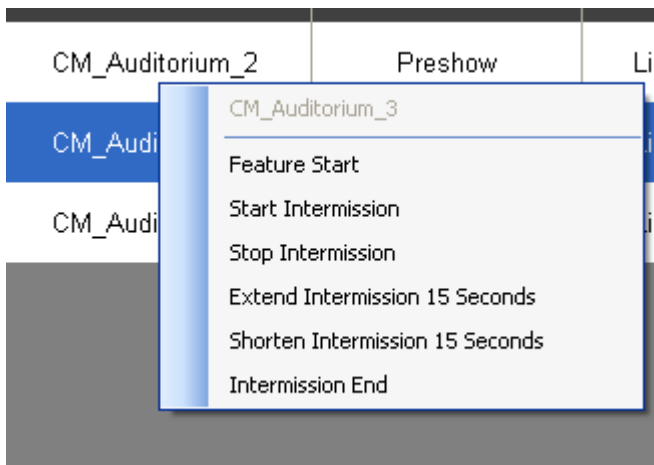
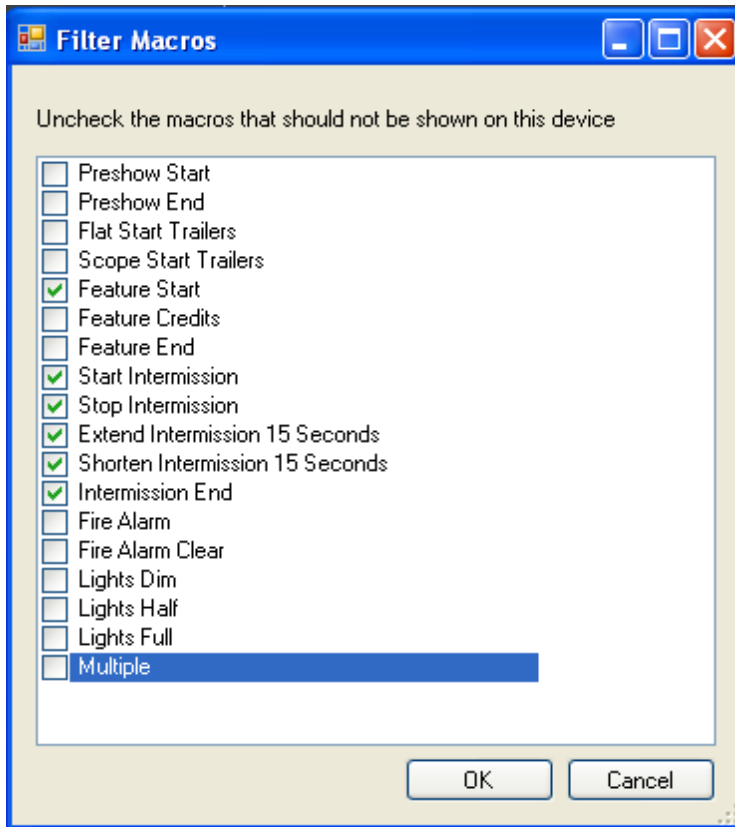
Macro Filter

You can select which macros can be executed from a specific Event Manager PC. Each JNIOR will have a set of macros and typically all the JNIORS will have the same macros. However, each JNIOR can have different macros.

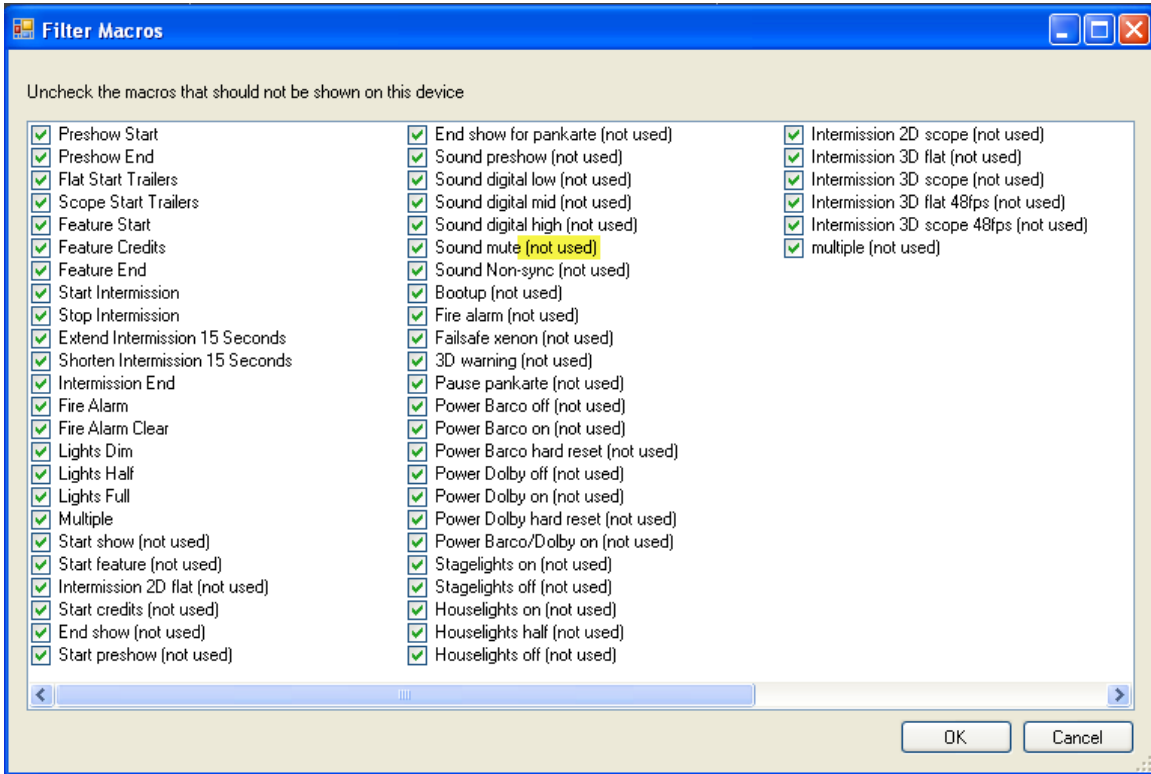
By clicking on the Macros pull down and then Select Visible Macros, Event Manager will display a list of all the macros available. The list will include all the macros from all the JNIORS.



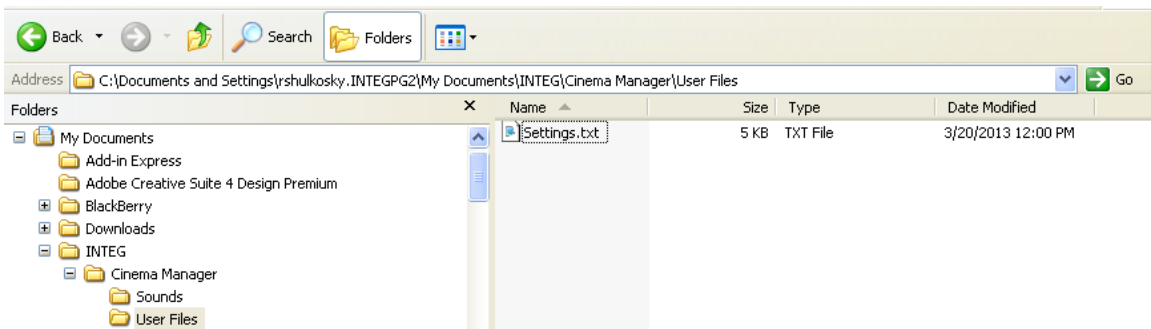
By selecting which macros you want the user of this Event Manager installation to be able to utilize, the macro selection list will be reduced.



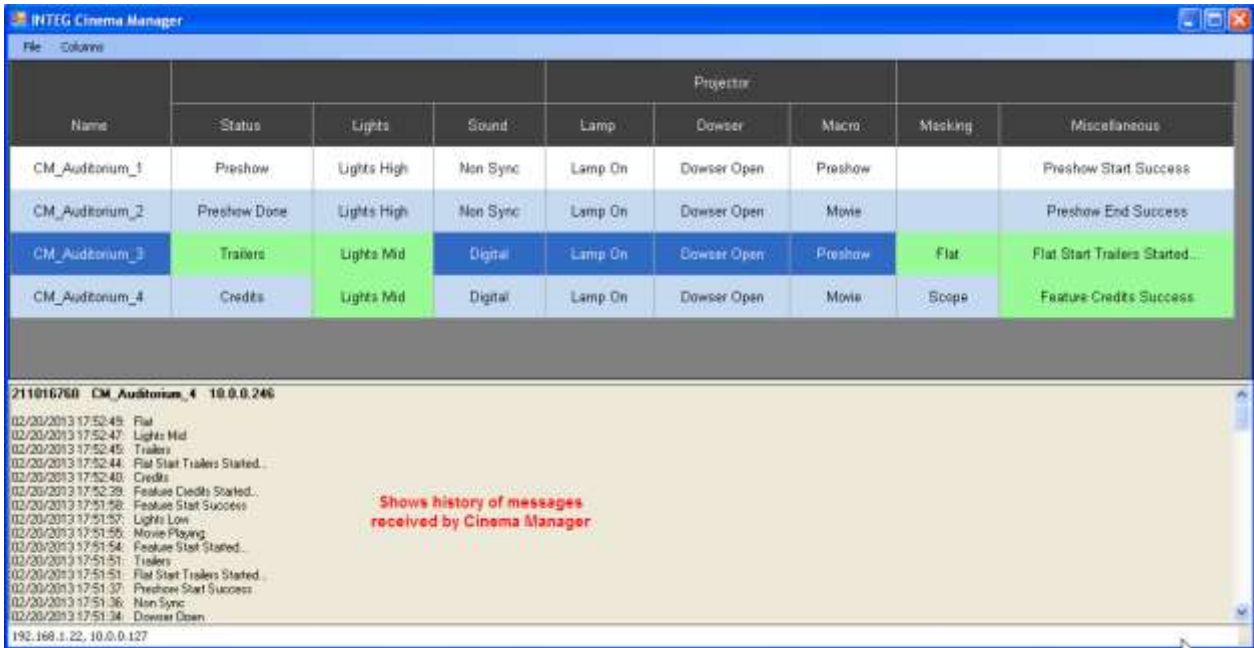
If a JNIOR has been disconnected or is not reporting to Event Manager, this may result in macros that are not currently being used since they only existed on that JNIOR. If you go to Select Visible Macros pull down again, the pop-up box will put the “not used” text next to macros that were at one time available.



NOTE: Event Manager does not automatically delete these macro names in case the JNIOR that is not available should become available again. To delete these names, you would currently have to open the Settings.txt file using Notepad and delete the old macro names. This file is located in the My Documents folder as shown below.



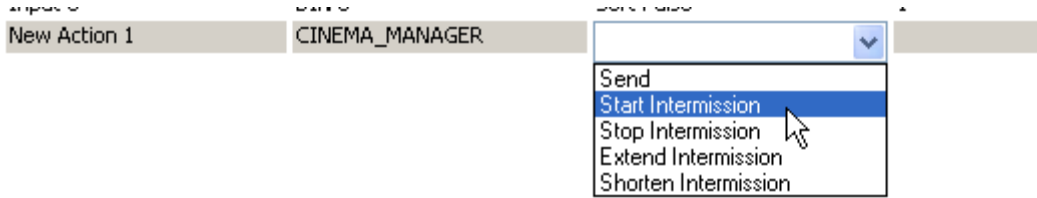
When the macros are executed manually from Event Manager or automatically by the preshow system, digital cinema server or any other method, the status messages will be sent to Event Manager as the macro is executed. When the status message is received, the box will turn colors and stay solid or flash for the time duration configured. A list of all the messages sent by the JNIOR to Event Manager will be listed in the bottom portion of Event Manager. Click on the JNIOR name to display the appropriate messages at the bottom of the display.



Intermission Logic

The latest Cinema program includes intermission logic which can also be used for any timed event. It works by having the digital cinema server trigger the ‘intermission start’ macro on the JNIOR. This macro can be any name, but it must have the ‘start intermission’ action. **The start intermission action also contains a user defined time duration for the intermission and the macro to execute when the intermission is complete.** Once the intermission is started, a timer will be displayed in Event Manager in the status column. When the intermission timer reaches 0, the end of intermission macro will be executed. The user can extend, shorten or stop the intermission from Event Manager by running the appropriate macro.

Below are the ‘actions’ associated with the intermission logic.



Below are typical ‘actions’. The data in the right most column can be any number using the format minutes:seconds. For the Start Intermission action, the intermission duration and the macro to execute when intermission is complete must be separated by a ; (semi-colon).

intermission_start	CINEMA_MANAGER	Start Intermission	2:15;Intermission End
intermission_stop	CINEMA_MANAGER	Stop Intermission	
intermission_extend_15	CINEMA_MANAGER	Extend Intermission	0:15
intermission_shorten_15	CINEMA_MANAGER	Shorten Intermission	0:15

separated by ; semi-colon

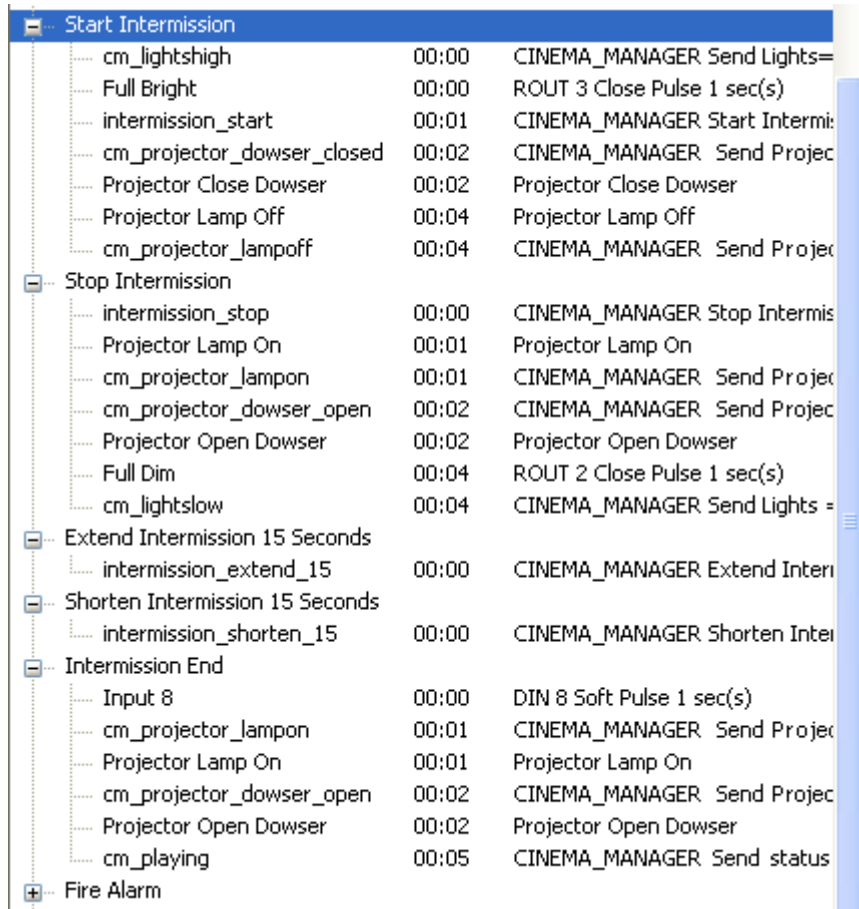
Below are example macros that can be used to with the intermission logic.

Start Intermission – the macro initiated by the digital cinema player and contains the Start Intermission action.

Stop Intermission – the macro executed manually from Event Manager to immediately stop the intermission. The macro to execute at the end of intermission will be automatically executed.

Extend Intermission and **Shorten Intermission** – the macros executed manually from Event Manager to extend or shorten the intermission. These macros can be run multiple times to extend or shorten the intermission by the amount of time set in the data column.

Intermission End – the macro automatically executed when the intermission timer reaches 0 or the Stop Intermission macro is executed. The macro is defined as part of the Start Intermission action.



Below is a picture of Event Manager showing the Intermission timer.

Name	Status	Lights	Sound	Projector			Marking	Miscellaneous
				Lamp	Dowser	Macro		
CM_Auditorium_1	Preshow	Lights High	Non Sync	Lamp On	Dowser Open	Preshow		Preshow Start Success
CM_Auditorium_2	Trailers	Lights Mid	Digital	Lamp On	Dowser Open	Movie	Flat	Flat Start Trailers Success
CM_Auditorium_3	Movie Playing	Lights Low	Digital	Lamp On	Dowser Open	Preshow	Scope	Feature Start Success
CM_Auditorium_4	Intermission (2:00)	Lights High	Digital	Lamp Off	Dowser Closed	Preshow	Scope	Start Intermission Success

When the timer reaches 0, the macro defined in the Start Intermission action will automatically execute as shown below.

CM_Auditorium_3	Movie Playing	Lights Low	Digital	Lamp On	Dowser Open	Preshow	Scope	Feature Start Success
CM_Auditorium_4	Intermission Complete	Lights High	Digital	Lamp Off	Dowser Closed	Preshow	Scope	Intermission End Started...

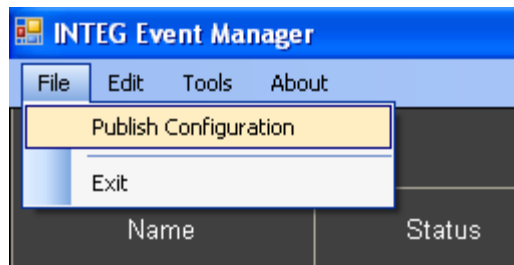
Web Based Event Manager

The Event Manager screen also has a web based version that is loaded for Series 4 JNIOR's that are hosts.

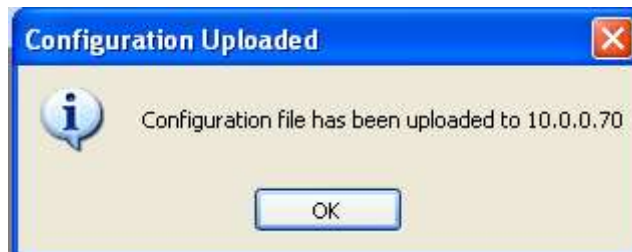
NOTE: In order to view this web screen you MUST be using Google Chrome, Firefox or Internet Explorer 10 (or greater). You need a 'modern Web Browser'

After you have configured your Event Manager PC application with all your columns, you must 'publish' this configuration to the host JNIOR so that web applications will have the proper information.

As shown below, go to File – Publish Configuration



When the 'publish' is complete, the following pop-up box will appear and it will contain the IP address of the host JNIOR.

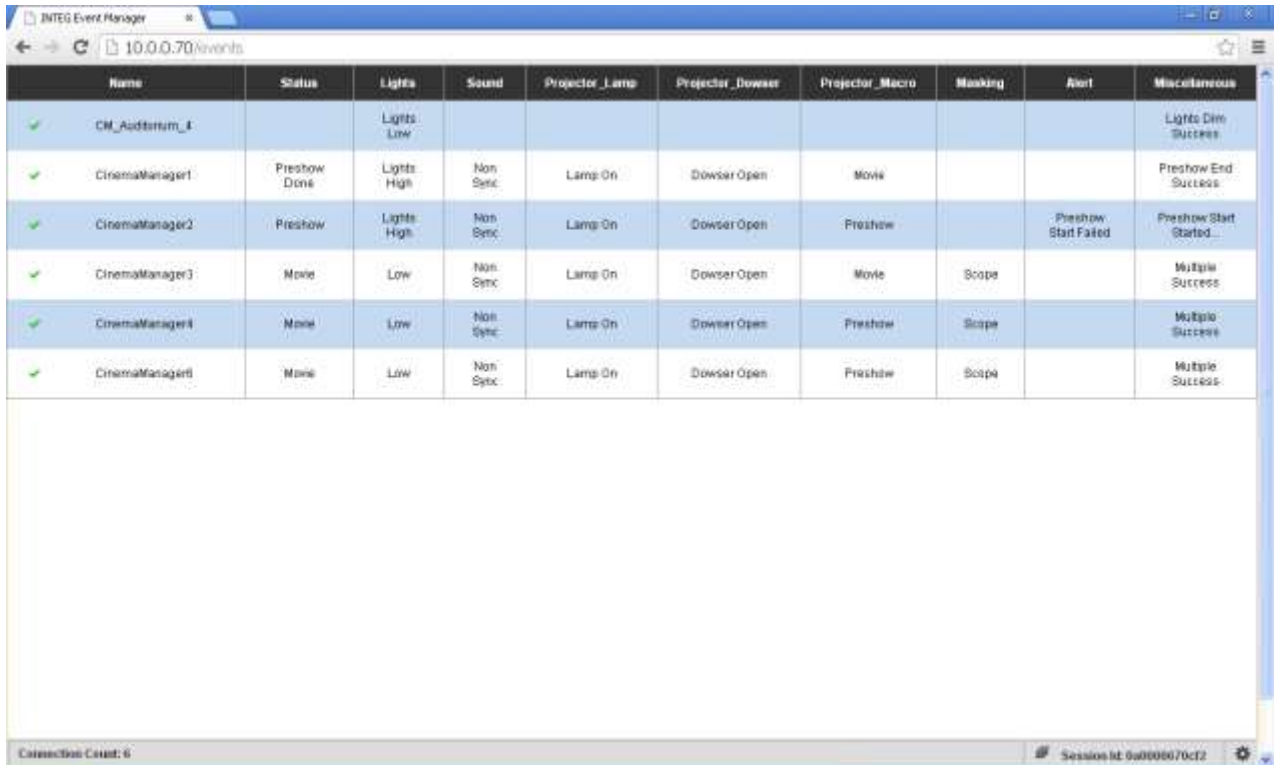


You can then launch the Event Manager Web Application from any modern browser by typing in the IP address of your host JNIOR followed by /Events.

Example: 10.0.0.70/Events

NOTE: Only 1 JNIOR in a theatre complex should have the XChange software that is part of Event Manager.

The following web page will be displayed.



The screenshot shows a web browser window titled 'INTEG Event Manager' with the address bar displaying '10.0.0.70/events'. The main content is a table with the following data:

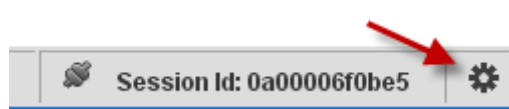
Name	Status	Lights	Sound	Projector_Lamp	Projector_Dwseer	Projector_Macro	Masking	Alert	Miscellaneous
CM_Auditorium_4		Lights Low							Lights Dim Success
CinemaManager1	Preshow Done	Lights High	Non Sync	Lamp On	Dwseer Open	Movie			Preshow End Success
CinemaManager2	Preshow	Lights High	Non Sync	Lamp On	Dwseer Open	Preshow		Preshow Start Failed	Preshow Start Started...
CinemaManager3	Movie	Low	Non Sync	Lamp On	Dwseer Open	Movie	Scope		Multiple Success
CinemaManager4	Movie	Low	Non Sync	Lamp On	Dwseer Open	Preshow	Scope		Multiple Success
CinemaManager5	Movie	Low	Non Sync	Lamp On	Dwseer Open	Preshow	Scope		Multiple Success

At the bottom of the browser window, there is a status bar showing 'Connection Count: 6' and 'Session ID: 9a000670cf2'.

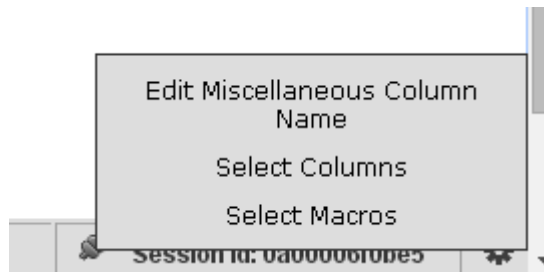
And if you 'left-click' on one of the JNIORs listed in the first column, a window will pop-up so you can execute macros. The window will contain buttons representing each of the macros on that JNIOR.



In the lower right corner of the Event Manager web page is an icon that you can click on to bring up a window of several configuration items for the web page.



Clicking on the icon will display the following pop-up window.

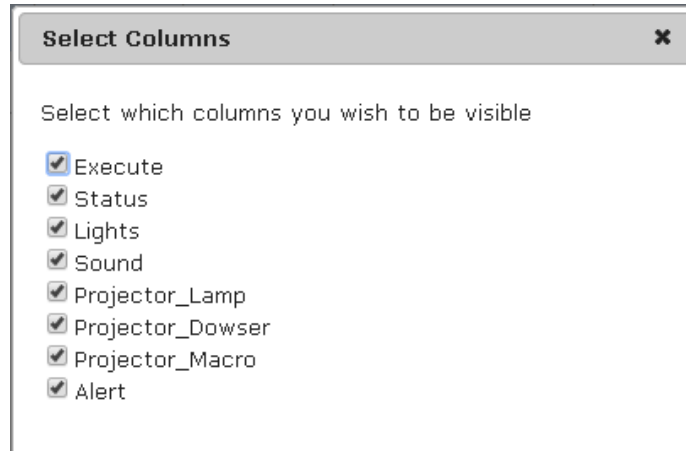


You can choose any of these items to change the configuration of the web page being displayed from the JNIOR.

NOTE: The changes will ONLY affect the webpage view for this PC. It will NOT change the set-up when the web page is viewed from another PC or device.

Edit Miscellaneous Column Name – changes the name of the last column which is a default column always available within Event Manager to receive standard messages and messages received without an available column name.

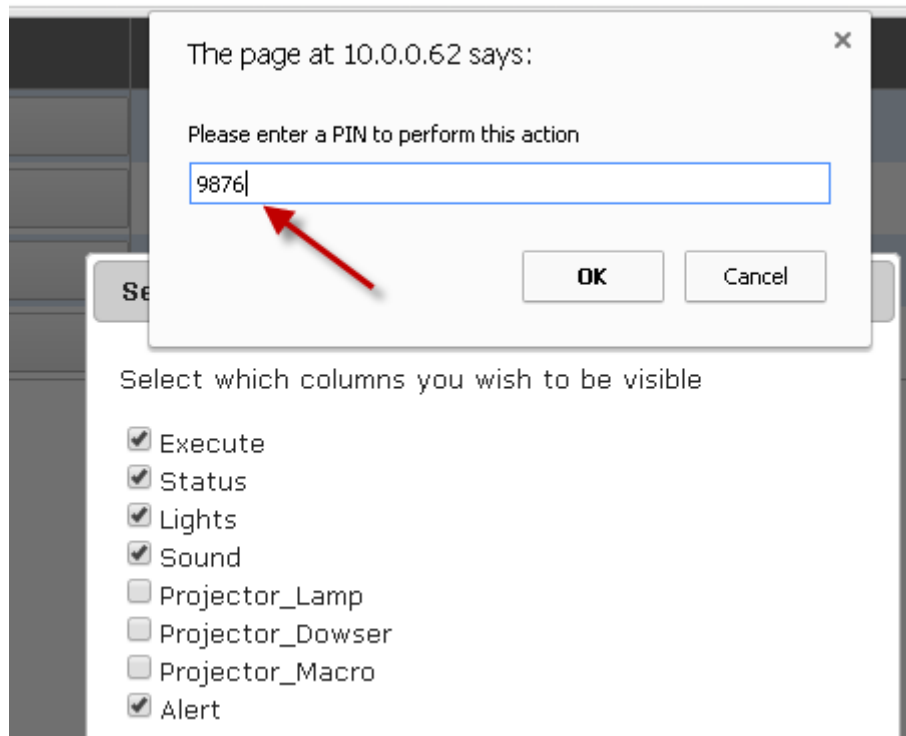
Select Columns – allows you to ‘check’ which columns will be available to view from this PC. By default, all are selected.



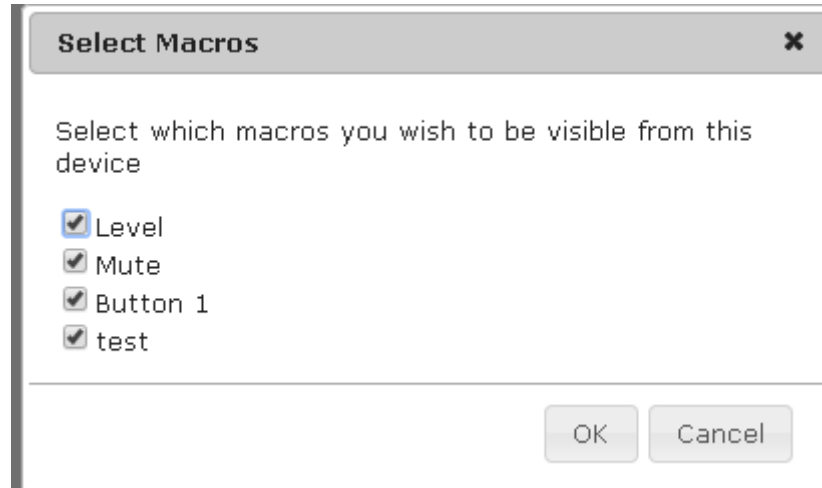
When you make a change, you will be asked to enter a password or PIN (personal identification number).

The default PIN is 9876

This number cannot be changed.



Select Macros – you can control which macros will be available for execution from this device. The list contains ALL the macros from ALL the JNIORSs being displayed. You will be required to enter the PIN to complete the change.



Summary

Thank you for purchasing the **JNIOR**. Hopefully this manual made the getting-to-know process of your new **JNIOR** very quick and easy. The **JNIOR** has many more wonderful tools and features available, and are explained in detail in the supplied documents.

- Copyright** Copyright © 2020 INTEG Process Group, Inc.
All rights reserved.
- Notice** Every effort was made to make this manual as accurate and useful as practical at the time of the writing of this manual. However, all information is subject to change.
- Trademarks** Trademarks are the property of their respective holders. Sun, Sun Microsystems, the Sun logo and Java are trademarks or registered trademarks of Sun Microsystems, Inc. in the United States and other countries. Microsoft, Windows, MS-DOS and Internet Explorer are registered trademarks of Microsoft Corporation.
- Use Restrictions** This User's Manual and the software contained in the **JNIOR** are copyrighted by INTEG Process group and may not be copied or reproduced without prior consent from INTEG Process Group, Inc. INTEG Process Group is not responsible for any errors or omissions that may be contained in this manual.

Please do not hesitate to contact our **JNIOR** team at **INTEG Process Group, Inc.** We can be reached via phone, fax or e-mail as follows:

INTEG Process Group, Inc.
2919 East Hardies Road, First Floor
Gibsonia, PA 15044

www.integpg.com
sales@integpg.com
support@integpg.com

PH (724) 933-9350
FAX (724) 443-3553