

Configuring the JNIOR for use with the Christie IMB

Last updated: December 5, 2019

The following information describes how to use the JNIOR with the Christie IMB server.

Please contact INTEG via e-mail at support@integpg.com or via phone at 724-933-9350 with any questions.

Overview

Since this document was originally created in April 2013, Christie has updated their software and made it easier to use the JNIOR with the Christie IMB. The Christie IMB can interact with the JNIOR two ways:

- 1) Directly control relay outputs on the JNIOR
- 2) Trigger macros on the JNIOR by sending the name of the macro to be executed to the JNIOR

You can use one or both methods. In order to use the second method above to execute macros on the JNIOR, the INTEG Cinema program must be installed on the JNIOR by the user. It is not installed at the factory.

Installing the Cinema Program

Cinema.JAR (for the Series 4 JNIOR) and Cinema.JNIOR (for the Series 3 JNIOR) are installed using the JNIOR Support Tool. The JNIOR Support Tool and the Update project that loads the Cinema program can be downloaded from the INTEG website at the following link.

<https://integpg.com/all-downloads>

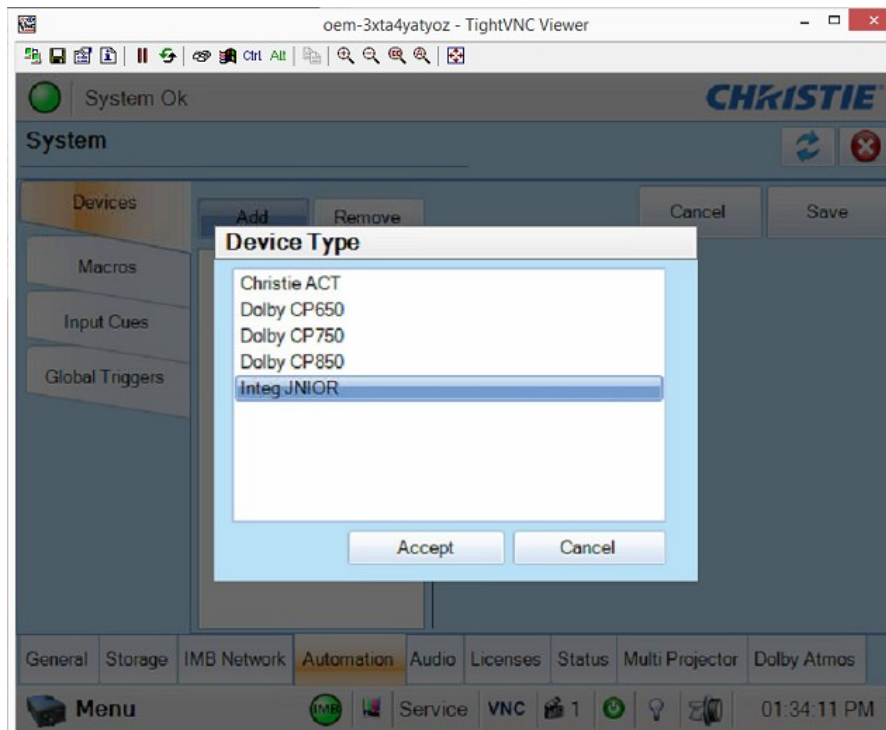
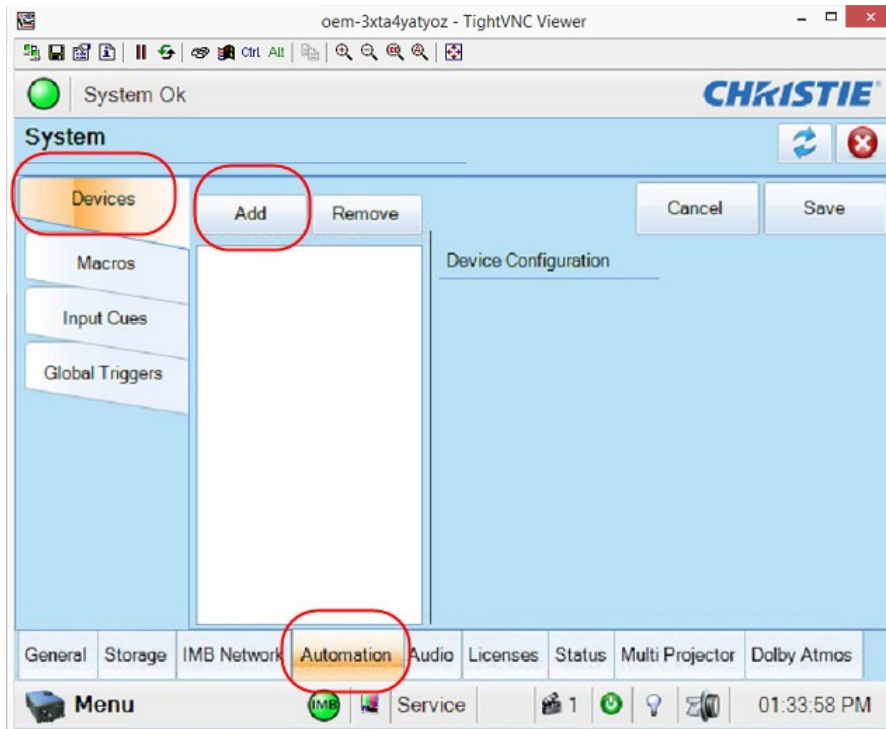
Please download the JNIOR Support Tool file and double click on it to install.

Please download the appropriate Cinema ‘update project’ zip file for your JNIOR, but do NOT unzip it. Go to the Update tab in the JNIOR Support Tool and click on the Open Project link and then navigate to where you saved the update project. The JNIOR Support Tool will unzip the project. Then click Publish Update to JNIOR and select your JNIOR.

NOTE: If this is the first time you are installing the Cinema program on your JNIOR, it is recommended that you leave all the update steps checked. If you have previously installed the Cinema program and only want to update to the latest version, then you only want the first and last steps checked. Uncheck all the other steps so your configuration is not changed.

Configuring the JNIOR and Christie IMB Communications

Please go to the System set-up - Automation and then the Devices tab in the Christie set-up. Then Add a new Device - the Integ JNIOR.



NOTE: All of the commands will be sent from the Christie IMB to the JNIOR using the JNIOR protocol port 9200. This is different than with older versions of the Christie IMB software (and with some other cinema servers) where the macro commands are sent to the Cinema Server Client port that is part of the JNIOR Cinema program. This is NOT needed anymore with the Christie IMB.

You will only need one Automation device set-up for the JNIOR.

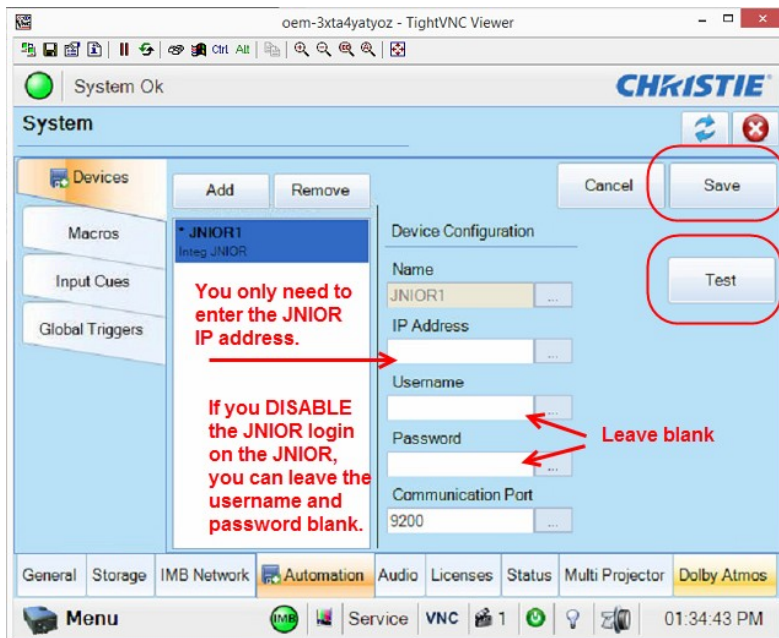
The easiest and most efficient way to have the Christie IMB interact with the JNIOR is to DISABLE the JNIOR login on the JNIOR.

NOTE: How to disable the JNIOR login on the JNIOR is described on the next page.

If you disable the JNIOR login, then you can leave the username and password ‘blank’ on the Christie device set-up page. As shown below, you only need to enter the JNIOR IP address.

AFTER you have disabled the JNIOR login on the JNIOR and entered the JNIOR IP address, you can then click on the ‘Test’ button on the Christie device page as shown below. This will cause the Christie IMB to make a connection to the JNIOR and verify a successful connection.

NOTE: You must click on the SAVE button on the Christie Devices tab to save the JNIOR configuration. A pop-up window will alert you that you have not entered a username or password, but as long as you disable the login on the JNIOR, you can say OK.



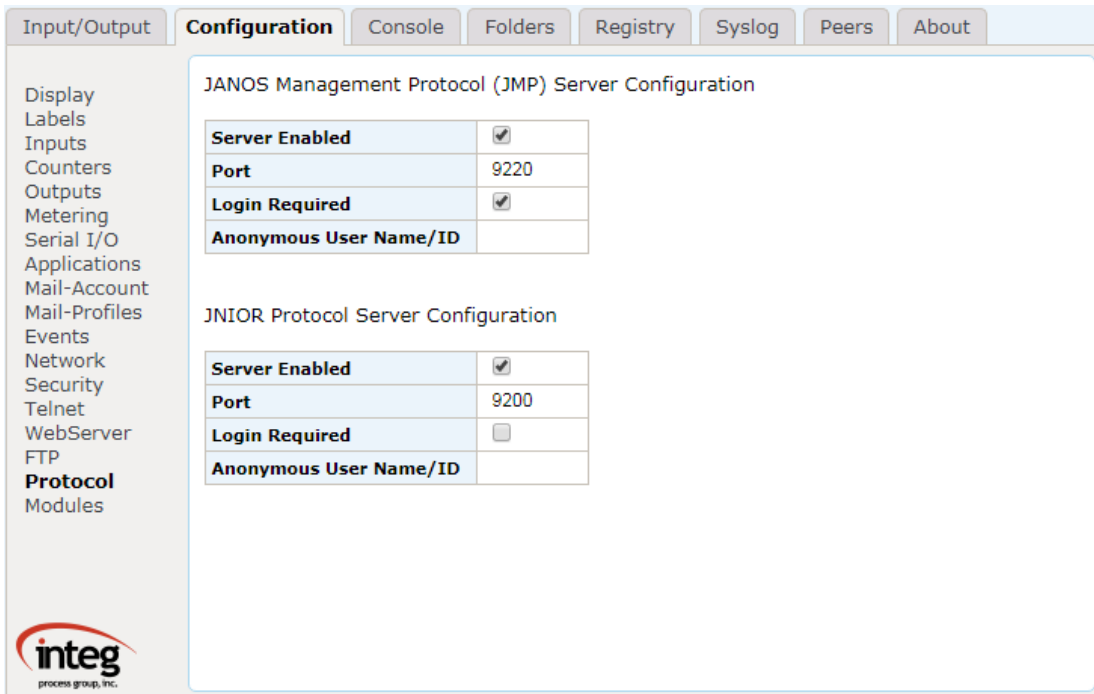
Disabling the JNIOR login – Three Different Methods

Even though the Christie can log into the JNIOR, it is highly recommended that you ‘disable’ the JNIOR server login on the JNIOR.

1) JNIOR Configuration Web Page

The user can disable the login for a Series 3 JNIOR from the main JNIOR web page by going to the Configuration tab and then the Misc tab and unchecking the box as shown in the screen picture below. A JNIOR Series 4 has you go to the configuration tab on the web page and then you can change the values in the Protocol tab.

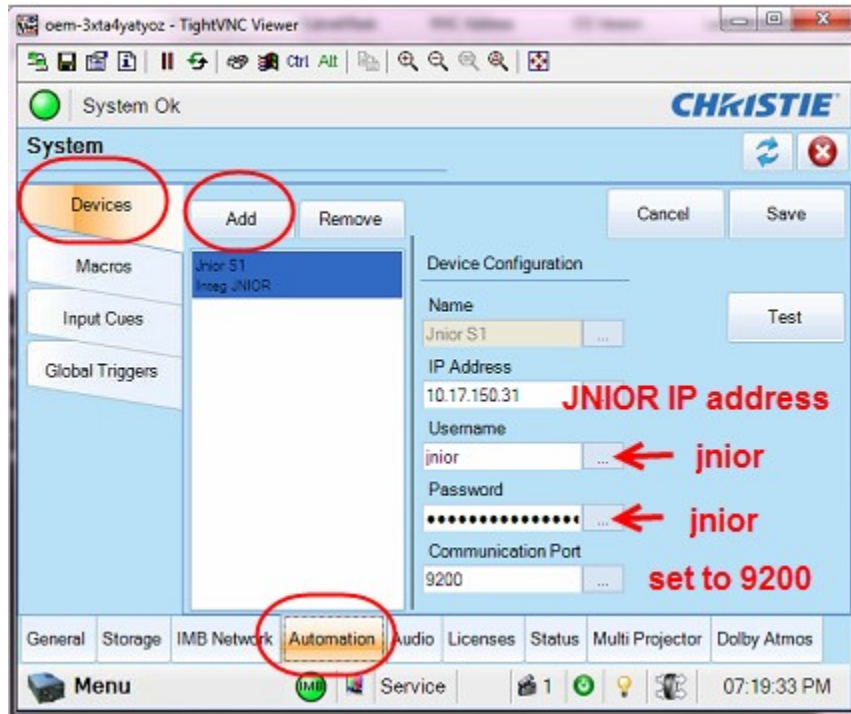
NOTE: If you are using the JNIOR Series 3, the main JNIOR web page is the configuration applet. If you are using the JNIOR Series 4, the dynamic web page is launched first, but click on Show Menu and then click on Classic Configuration web page.



Using the JNIOR Login with the Christie IMB

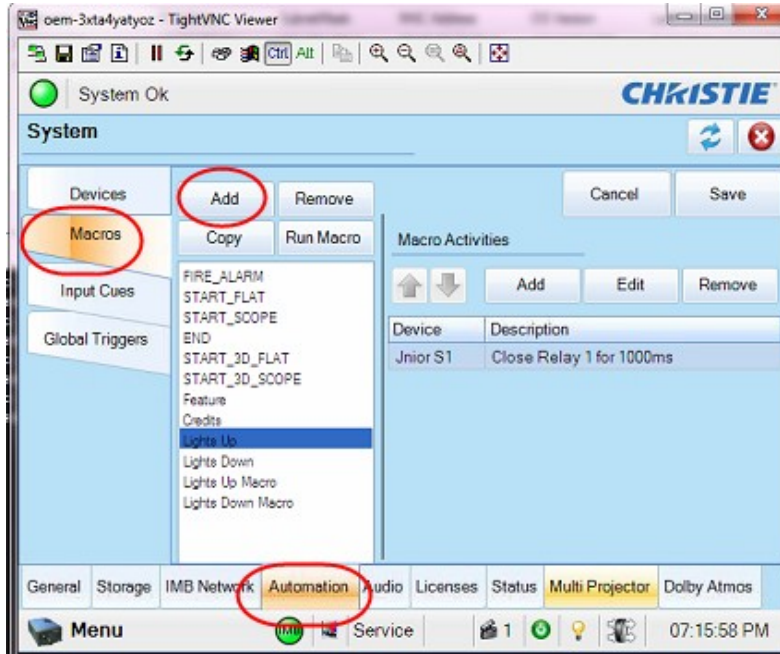
If you want to use the JNIOR login, you will need to enter the JNIOR IP address, the default username (jnior) and password (jnior) and the JNIOR protocol port (9200).

Do NOT disable the JNIOR login on the JNIOR.

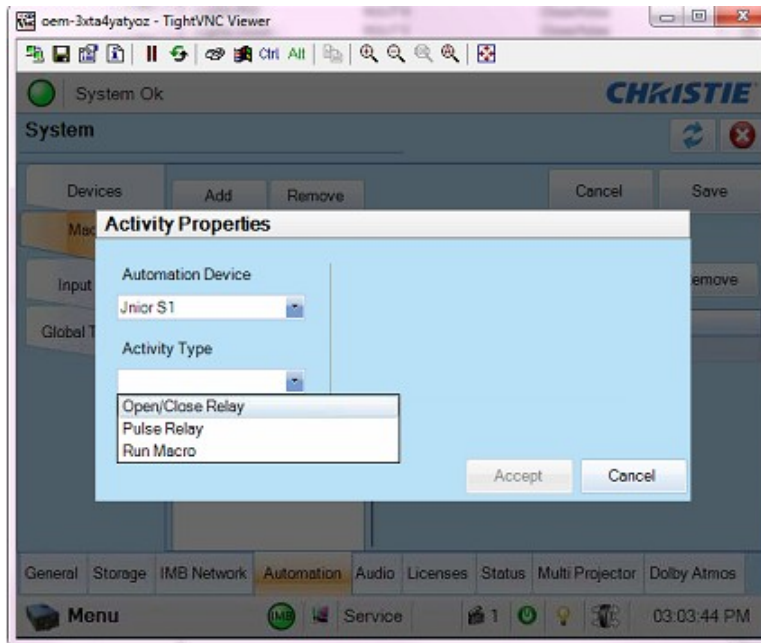


Building Macros on the Christie IMB

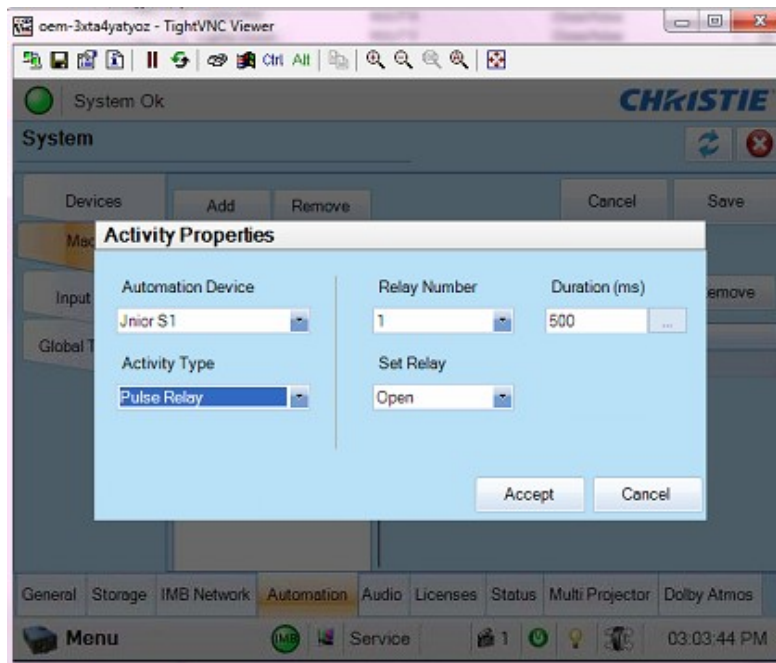
After you have added the JNIOR to the Christie IMB, you must now build ‘macros’ on the Christie to control the JNIOR relays and/or to trigger macros on the JNIOR. Go to the Automation section and click on Macros in the Christie IMB set-up software.



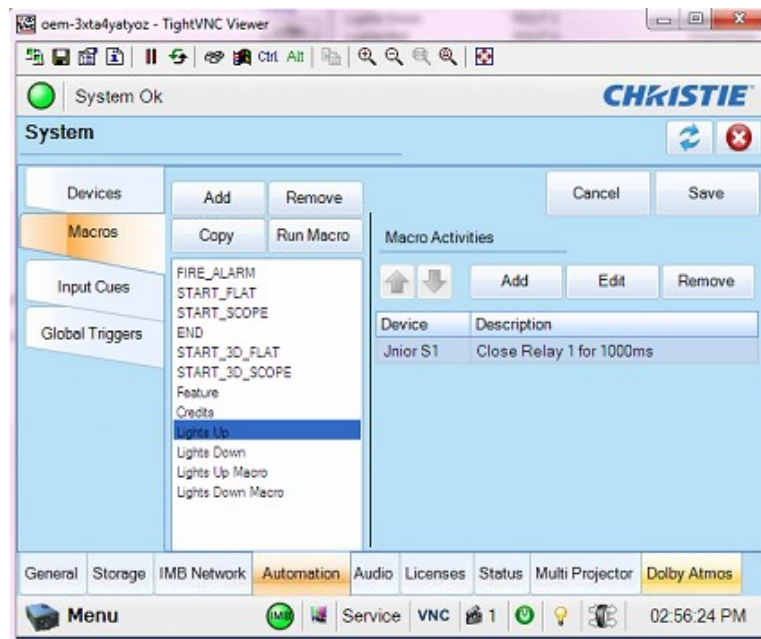
As shown below, you can Add an action to a macro on the Christie IMB that can Open/Close a relay on the JNIOR, Pulse a relay on the JNIOR, or Run a Macro on the JNIOR.



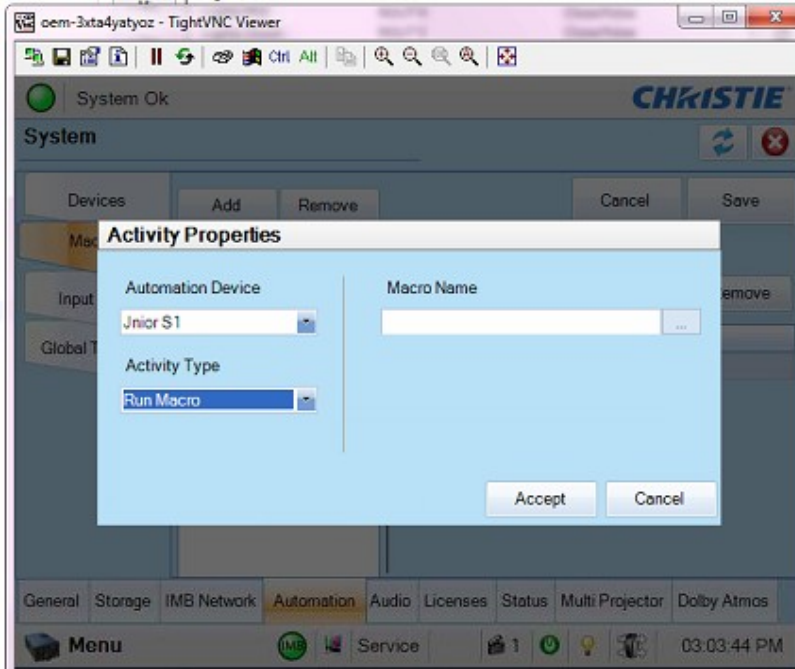
Below is an example of the Pulse Relay command. You must select the relay number, whether you want to Open or Close the relay and how long to pulse it on (or off).



Below is what the Christie IMB macro looks like that pulses relay output number 1 on the JNIOR for 1000 milliseconds.

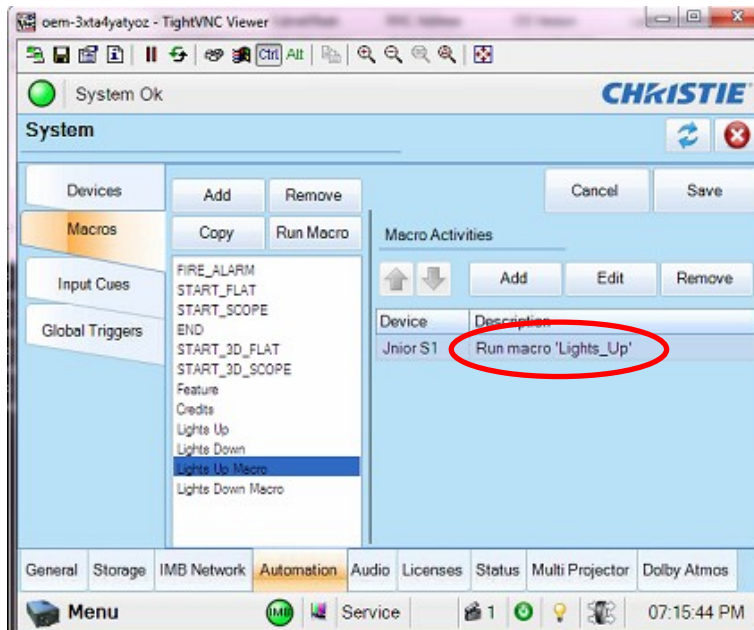


You can also add an action to a macro on the Christie IMB that will trigger a macro on the JNIOR. Select the Run Macro command and enter the name of the macro on the JNIOR to run.



Below is an example of a macro on the Christie IMB that has the action to run a macro on the JNIOR called Lights_Up

NOTE: The Christie IMB does NOT like spaces in the macro names. All of the macros on the JNIOR must not have any spaces. Please eliminate any spaces in the macro names or replace them with an underscore ‘_’

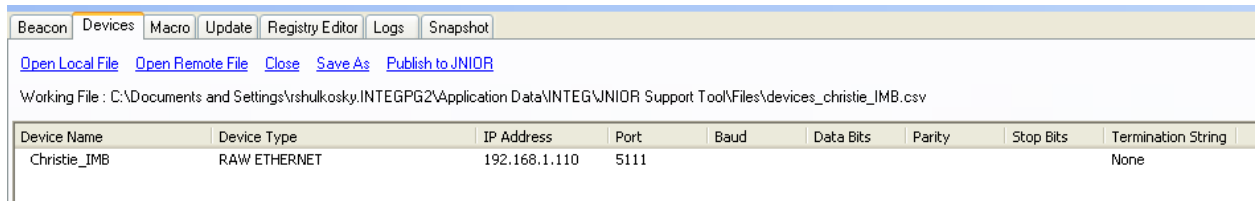


Controlling the Christie IMB from the JNIOR

If you want the JNIOR to be able to Start and Stop the Christie player, then you have to do the following.

Configure the Christie IMB as a RAW ETHERNET device in the Cinema devices file. The JNIOR will communicate with port 5111 on the Christie IMB.

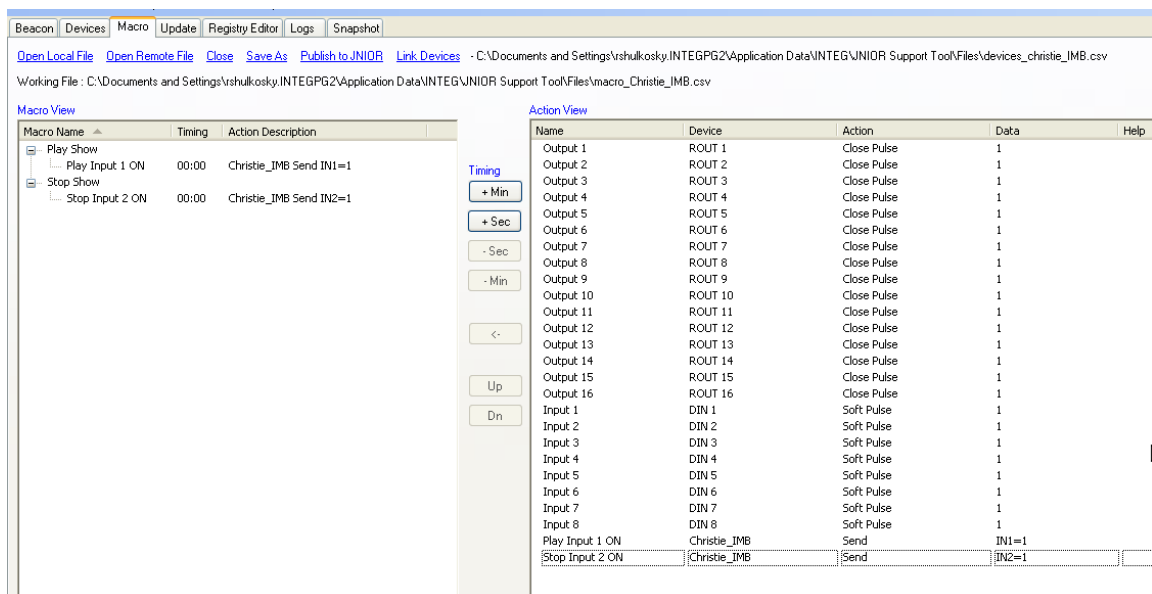
NOTE: The termination string in the example below is set to ‘None’. Please check whether your Christie set-up needs a termination string or not.



Link your Devices file to the Macro file and then add actions that will send the appropriate string of text to the Christie. In the example below, the actions to send the strings IN1=1 and IN2=1 were created and added to two different macros.

NOTE: You will have to configure the Christie IMB to recognize these two strings so that when the Christie receives IN1=1 it will Play the Show and when it receives IN2=1 it will Stop the Show.

NOTE: You can select any text that you want for these actions. IN1=1 and IN2=2 are just examples. The strings are only sent to port 5111 when the macro is executed.



You will then have to ‘trigger’ the appropriate macro to get the correct message sent to the Christie IMB.

For example, if you want digital input 1 on the JNIOR to send the message IN1=1 to the Christie when the input goes ‘on’ (from low to high), then you must configure the Trigger Registry Key in the Cinema program for input 1. As shown below, you replace the word ‘none’ with the name of the macro that you want executed when the digital input goes ‘on’.

In the above example, we want to execute the Play Show macro, so we enter Play Show into the Trigger Input 1 registry key.

